

A Database Publication

ATARI USER

Vol. 1 No. 5

September 1985

£1

8-PAGE SPECIAL

**Launch of
the 520ST**



**The great software
race is on!**

ALSO IN THIS ISSUE

Features on conditional loops, binary logic, display lists, graphics, screen dumps, Logo insights - plus an action-packed maze game

WELCOME TO ATARI MAGAZINE

(IF YOU'RE NOT YET AN



(Pack 1:
800XL, 1050 Disk Drive,
HomeFile Manager, The Pilot,
Demonstration Software, £299.99) (Normal cost £399.99)

The only way to make full use of ATARI USER is to become one. And the easiest way to do that is with ATARI Personal Computer Packs.

There isn't a better way to get into computers. There isn't a more comprehensive starter pack.

Only ATARI could give you a 64 Kram memory, cassette 'soundthrough' capabilities, a maximum of 256 colours on the screen at one time and 4 'sound' voices.

ATARI 800XL PERSONAL

COME ATARI USER MAGAZINE.

ATARI USER, STOP HERE.)

A choice of a 1050 Disk Drive or a 1010 Cassette Programmer Recorder and additional software.

No one else could offer you all this power at these prices.

And, as everything comes together, you can make the most of the unbeatable ATARI 800XL straight away.

Without doubt, ATARI Personal Computer Packs are the easiest way to get into computers.

The only difficulty is deciding which one. Now read on.

PERSONAL COMPUTER PACKS



Pack 2: 800XL,
1050Cassette Programmer Recorder
includes: In Programming, PolePosition
Demonstration Software. £129.99 (Recommended £159.95)



Vol. 1 No. 5 September 1985

Managing Editor: Gerald Maslin
Features Editors: Cliff McNeight
Mike Bibby

Editorial Team: Alan McLachlan
Kevin Edwards
Pete Bibby

Technical Editor: David Willey
Production Editor: Peter Oliver

Layout Design: Heather Stoddick

News Editor: Mike Cowley

Advertisement Manager: John Riddling
Advertising Sales: John Snowden
Editor in Chief: Peter Bownard

Editorial: 081-488 8935
Administration: 081-488 8380
Advertising: 081-488 8900
Subscriptions: 081-480 0173
Telephone Sales: 79 MAG001
Faxes: 285871 MONREF G
Quoting Ref.: 79 MAG001
Postal Mailing: 014568200

Published by:
Databases Publications Ltd,
Europe House, 88 Chester Road,
Hazel Grove, Stockport SK7 5NY.

Subscription rates for
12 issues, post free:
£12 - UK
£15 - One (Sterling only)
£25 - Rest of world (airmail)
£40 - Rest of world (airmail)

"Atari User" welcomes program listings and articles for publication. Material should be typed or computer printed and preferably double-spaced. Program listings should be accompanied by cassette tape in disc. Please enclose a stamped, self-addressed envelope, otherwise the return of material cannot be guaranteed. Contributions accepted for publication by Databases Publications Ltd will be on an as-rights basis.

© 1985 Databases Publications Ltd. No material may be reproduced in whole or in part without written permission. While every care is taken, the publishers cannot be held legally responsible for any errors in articles, listings or advertisements.

"Atari User" is an independent publication and Atari Corp. USA Ltd are not responsible for any of the articles in this issue or for any of the opinions expressed.

News Trade Distribution:
Europe Sales and Distribution Limited, 11 Brighton Road, Crawley, West Sussex BN1 0BAF. Tel 0293 37083.

News

All the latest developments in the expanding world of Atari computing.

7

MicroLink

This month's update on news from Britain's electronic mail service.

11

Beginners

Mike Bibby's regular series continues to take the pain out of programming. This month he explains why some things are more equal than others.

12



Adventuring

Brillig looks at the games which combine Scott Adams adventures with Marvel comic characters and there's the solution to last month's back-dropping problem.

16

Software

Fast arcade action with Boulderdash and Hjälek. Action for the strategists and Wokbringer for aspiring Post Office workers everywhere.

20

Graphics

Dave Russell's still working his way through the Atari graphics modes. This month Modes 4 and 6 receive his attention.

22

Utility

There's some clever tricks in Roland Waddilove's Data Making routine.

24

Display List

Mike Rowe explains that it's not as all made to use a Display List Interrupt.

26



Output

Dump those Mode 8 pictures to your Atari 1025 printer with the aid of Michael King's program.

48



We take a first look at the wealth of software now being developed for the 520ST - in our 8-page introduction to Atari's wonder machine.

29



Hardware

Mike Cook describes the extensive addressing modes of the powerful 68000 chip.

50

Game

Help Horace the Blob avoid the Maze Monsters in this fast-action version of the arcade classic.

38



Bit Wise

If you thought ECR was something to do with Winnie the Pooh, you'd better read Mike Gibby's series on binary operations.

42

Logo

Derek Redburn stresses the list processing properties of Logo.

54

Mailbag

Four pages of your letters - the means, the praise, the questions, they're all here.

55

Order Form

Binders for your back issues, disc doubles, dust covers for your micro and a free T-shirt for all new subscribers.

60

THE
NEW

ATARI 520ST

NOW
AVAILABLE!

Now
In
Stock!



only

£749.⁹⁹

DISKS

3½" 52500 £4.95
3½" 52500 £5.95
3½" HD/AD/AM/R £14.95
ALL MAKES IN STOCK

SOFTWARE

HABA CHECK KEEPER
Personal Finance Program

HABA COM

Communication Software

HABA HIPPO 10"

Powerful 10" Language

HABA CALC

&

HABA WORD

Counting System

Call for more Software

THE ATARI 520ST

COMPUTER SYSTEM
COMES COMPLETE WITH
3½" 52500 DISK DRIVE
HI-RES MONOCHROME MONITOR
MOUSE, TOS, EOS, LOGO
BASIC, GEMWRITE, GEM DRAW
GEMDISC TOP, DEMO

520ST LEADS

520ST to Centronics
Printer . . . £24.99

MDI to MDI LEADS
. £79.95

MOUSE EXTENSION LEADS
. £14.99

520ST to MODEM LEAD
. £19.95

TO ORDER YOUR 520ST WRITE OR PHONE TO

**SOFTWARE
EXPRESS**
INTERNATIONAL

12 STONEHURST ROAD, BRIMINGTON, BIRMINGHAM
TELEPHONE: 0511 384 5080



TELEPHONE ORDERS NOW BEING TAKEN



**'ST' HOTLINE
(021) 384 5080**

PLEASE NOTE: ALL ORDER DISCOUNTS WITH EITHER FULL
PAYMENT OR DEPOSIT ONLY. NOT ALL CREDIT LIMITS. YOUR
ORDER IS SUBJECT TO OUR CREDITORS.

ATARI IS THE SFC. TRADEMARK OF ATARI CORP. LTD.
ALL INFORMATION CORRECT AT TIME OF GOING TO PRESS

Tramiel pledges support for the whole range



Jack Tramiel... "our sales projections are high"

ON the eve of the consumer launch in the UK of the 520ST Atari chief Jack Tramiel has pledged continuing support for all the company's current machine range.

In an exclusive interview with Atari UK, the controversial former boss of Commodore insisted that the arrival of the 16 bit series will not mark the beginning of the end for Atari's less powerful models.

"We intend to support all lines which Atari has manufactured and are selling", said Jack Tramiel.

"This includes the 520000 games machines, the 1300XL and 800XL computers, the ST line and all future machines".

Questioned about the number of 520STs Atari hopes to sell in the first 12 months, the outspoken head of the Atari clan replied: "Sales projections are high."

"We believe that any company which has smaller than 20 per cent share of the personal computer market will be out of

business in the long run".

Barring Jack - as he is known in the States - went on to deny claims that the ST was aimed primarily at the business market.

"Since I started in this business, I've always sold personal computers", he said. "People have the imagination to

do what they like with my products".

A suggestion made by a leading UK retailer that the 520ST was too cheap with not enough profit in it for dealers to provide the necessary back up also met with a similar rebuke.

"The profit margins we provide for retailers are comparable to any in the computer industry", he said.

Asked about stories circulating from the US that STs are already being sold before any software is available, he said: "Many people are buying it without software is because for every machine there are stages."

"In the first stage the program developers buy machines. In the second stage the computer enthusiasts and hobbyists buy the machines."

"Then, as software is developed, comes the third stage - the consumer buys."

What will follow the ST? "If you are in Las Vegas in November please visit our booth at Comdex. You will see quite a line of new products..."

Hard discs on the way

ATARI hard discs for the 520ST are to have a 10Mbyte capacity and will be available in the United States in October.

This was the message from Jack Tramiel when he spoke to Atari UK.

However he did point out that UK purchasers of the 520ST will have to wait until November for the British versions to be made available.

Spreadsheet released

DISC and cassette versions of Audigenic's spreadsheet Micro Swift are being released this month for the Atari 800XL and 1300XL.

The machine code program is operated by pop-up menus and incorporates advanced functions such as definable column widths and a selectable system of cell formatting.

Price will be around £20.

130XE DEAL

COMFUMART has stolen a march on other dealers by offering a cut-price package incorporating the Atari 1300XL.

The company is offering savings of £80 on its Atari package - consisting of the 1300XL 1050 disc drive and ten blank discs - which now costs £299.95.

DUTCH PICK THE 800XL

ATARI has achieved a dramatic breakthrough in Europe with the news that the Dutch government has selected the 800XL as its recommended edgar for the country's schools.

The company now predicts that this will result in sales of 100,000 machines to educational buyers in Holland over the next two to three years.

Atari was given the blessing

of the Dutch after months of negotiations and in the face of intense competition from major rivals.

This is now being seen as the key to unlock the door to similar deals all over Europe. However France remains the one country where Atari is unlikely to make much headway, thanks to the chauvinistic attitude of the French themselves.

As part of the Dutch deal the

800XL - named as Home Computer of the Year in the British Micro Computing Awards 1985 - is now to be featured in a television series there.

Breakthrough

This, according to the company, is being designed to introduce school children in Holland to the intricacies of computing, similar to the

pioneering BBC series.

"This award is a major breakthrough for Atari computers in Holland", says Rob Harding, Atari UK sales manager. "It was won in the face of formidable competition from Philips, the indigenous manufacturer."

"We believe that this will lead to the 80000, becoming the leading 8-bit machine in education".

Games link with toys company

SOFTWARE house Mantic has joined forces with a toy manufacturer and comics publisher in developing its latest release for the Atari 8-bit machines.

In mid-October it will be launching *Zoids - The Battle Begins*, the first in a series of computer games based on a range of Zoid robot toys made by Tomy.

Both manufacturers are keeping in close touch with Marvel, which is bringing out a comic based on the *Zoids* adventures.

Mantic says Tomy has orders from all over the world for its dinosaur-like robots -

sales of the toys have already reached the two-million mark in the UK.

Tomy is also planning to spend in excess of £1.5m on television advertising alone in the run-up to Christmas. Mantic is hoping its partner's promotions will help sales of its own game.

"*Zoids* have clearly captured the imagination of the same kids who buy computer games", said a spokesman for the company.

The *Battle Begins* is an arcade game which centres on the battle for supremacy between two warring factions of *Zoids*. Mantic says it involves a lot of strategy.



LASER DISC SYSTEM FOR ATARI

ATARI is set to become the first major manufacturer to introduce a laser-read compact disc system in this country.

Spokesmen at Atari's headquarters in Sunnyvale, California, and at Bleigh have confirmed the product is under development and will be released before Christmas with

a price tag of about \$500 - under £300 at current exchange rates.

The CD ROM player is based on a Philips drive unit and is designed to run with the Atari ST range.

It will be capable of storing 600 megabytes of memory on one 12 cm optical laser disc.

A spokesman told *Atari User*:

"We are also thinking of making it an audio product so it will double as an audio player".

A prototype, previewed in America recently, running with the ST, stored 20 volumes of an encyclopedia on one-third of its capacity.

There was the full index of the encyclopedia on another third and high quality graphics

related to the material on the other third.

It took approximately three seconds to locate any particular reference using laser scanning.

Drives using developed by Philips and disc and tape manufacturers 3M have been available to North American original equipment manufacturers for several months.

Rigel Murphy, 3M's disc products manager in the UK, has said that CD data storage is "the technology that will substitute for all forms of recording media in 10 to 15 years time".

His company believes optical memory systems will take off within the next few years, with annual disc sales expected to reach half a billion by 1990.

The days will be able to store a variety of information - standard computer data, graphics, digitised TV pictures and audio.

SOFTWARE IMPORTS FROM USA

DISTRIBUTOR: Software Express is importing four utilities and five games for the Atari 8-bit range from the United States.

Homepack is a three-in-one package which includes word processor, information manager and telecommunications program. Price is £49.95.

A word processor called

Paper Clip will cost around £50. It enables the user to merge Touch Tablet and other pictures with text and also to print out.

Broderbund's Print Shop, price £40, enables users to create letterheads, greetings, messages, signs and displays. Extra disc files cost £20.

Last in the utilities section is **8-Graph**, a graphics construction

program which allows bar or pie charts to be made.

The games are *Apple's Illusion* on Procterus and Ballistics, *Broderbund's* book-based *Mind Wheel* game for an Atari with twin drive, and *Microprose's* strategic war game, *Clash in Europe*, and its *Great American Road Race*. Cost per program ranges from £30 to £40.

Micro Live returns to the screen

TELEVISION'S Micro Live series is returning to BBC 2 as a result of pressure from computer buffs.

Starting on October 19 the new weekly series will cover subjects ranging from electronic music, micro in schools, the Data Protection Act and the use of computers in timing races.

The basis for the personal computer market is to be featured in a serious film with a lightweight title, Big Blue and the 1000 Ovaries.

Micro Live will also take an in-depth look at work being done by the Carnegie-Mellon University in the States on molecular membranes and robots, communications, and networking.

These, together with other items still to be filmed, will take the series up to December 13 when it will take a break for Christmas. It will return for another 10 weeks starting on January 13.

The program's producers have also taken heed of the viewer's mailing by introducing more items on personal computers. But air time will also be given to the growing business and communications sectors.

Presenters of the program will be Lesley Judd, Ian Mullaigh-Stevens and Fred Harris. Micro Live will go out on BBC 2 at 7.30pm each Friday.

Two-in-one cassette

A CASSETTE offering two versions of the same game - Boulder Dash - one for the Atari 48k and one for the Amstrad, has been launched by Microsoft.

Said marketing Pat Biron: "It makes sense for dealers to stock only one product catering for two machine markets."

The two-in-one will not affect the customers who will still be getting the game for the normal £9.95.

Top team for 520ST launch

ATARI boss Jack Tramiel is to spearhead the consumer launch of the 520ST on the first day of the Personal Computer World Show on September 4.

The fact that he is to appear with his American entourage is being seen as a demonstration of the importance attached to the new machine's showing on the UK market.

It was because of this that the first ST machines were shipped to Britain some weeks ago, much to the irritation of would-be developers Stateside.

When questioned about this Tramiel said the decision had been made based on the overwhelming interest shown in the ST when it was unveiled at the Hannover Show earlier this year.

"As an international marketing company we put emphasis

on all our markets, but especially Europe", Jack Tramiel told Atari User.

In recent weeks UK software houses, like their US counterparts, have been involved in a mad scramble to provide ST products ready for the consumer launch here.

Such has been the interest generated by the machine that most major British companies got caught up in the rush to actually buy ST development systems.

"We even had to wait in line to pay for and", bemused a spokesman for one company a little stood off the mark.

Programmers have been working round the clock in an attempt to beat the September deadline. Although many will only be showing "unfinished" products, more than 80 software houses will be featur-

ing their wares on the Atari stand at the PCW Show at London's Olympia.

"There has been nothing quite like it since the post-war", said one industry observer. "It's as though Jack Tramiel had invited them all to the opening of the Koolhaas".

TOP VALUE

A REVIEWER in Popular Computing Weekly has described the as-yet-to-be-released Commodore Amiga as the main challenger to the Atari ST range.

However the writer, Andrew Penfold, concludes that the ST is likely to score heavily on price - some £400 cheaper for the basic model, which includes a monitor when the Amiga does not - and the fact that it has more RAM.

Atari bridges the gap

ATARI owners have been invited to help fill a gap in our national heritage caused by the likes of Hans VIII and Oliver Cromwell.

Because of these and other iconoclasts there is no British history of Nativity art as there is in other European countries.

But that is something architects and historians Count and Countess Andrei von Stauffer intend to correct.

They have organised the First British National Nativity Competition to put Britain alongside the other countries of the world who already have a longstanding tradition of Nativity-making.

It coincides with the Twelfth World Congress of Nativityists, which is hosted by a different country every three years and this year is in Innsbruck, Austria, in December.

The competition, in two

parts, will be held at Westminster Cathedral on December 8 and at the Christian Resource Exhibition at the Horticultural Halls in London on February 8.

Count and Countess von Stauffer have been working closely with their international counterparts for eight years, as well as with British craftspeople, artists, photographers and - during the past two years - computer graphics artists.

They have been helped by Epsom UK, which was involved in the Christmas Archives Exhibition, Folk Nativities at the World, at the Baroque Centre last winter.

The Epsom connection with the National Nativity Competition is in the special category for the best computer-generated image of the Nativity.

Any part of the Christmas

story may be represented, and entries will be judged on originality, content and approach.

Epsom will judge this section of the competition and award a prize to the winning computer artists.

"The winner in the computer category will also compete for the overall Best in Show trophy", Count von Stauffer told Atari User.

"And it is likely to be given a place in the British Nativity archives which will be going on tour to the United States and leading Commonwealth countries shortly."

Atari owners who want to enter the competition should write to National Nativityists Competition, Christmas Archives, 84 Severn Road, Cardiff CF1 9EA, enclosing a 24p stamp.



EUROPE'S LEADING
'ATARI'
MAIL ORDER
SPECIALISTS

**SOFTWARE
EXPRESS
INTERNATIONAL**

HARDWARE

128 KB COMPUTER 128K	189.99
13000/10500 PACK including software	299.99
8088/10500 PACK including software	249.99
1024 DOT MATRIX PRINTER	109.99
80286 MODEM	149.95
MODEM INTERFACE (w/ Western software)	59.95
JOYSTICKS	
PADDLES	

SIMULATION

Sublogic F 5. 11	(C)	44.95
F 15 Strike Eagle	(C)	14.95
Solo Flight	(C/D)	9.95/14.95
Space Shuttle	(R)	19.95
Spitfire Ace	(C/D)	9.95/14.95

STRATEGY

Broadsides	(C)	32.95
Cavaliers Chess 3.0	(C/D)	9.95/12.95
Operation Market Garden	(C)	55.95
Computer Ambush	(C)	49.95
Centric Balance	(C)	33.95
Centric Balance II	(C)	33.95
Knights	(C)	33.95
Field of Fire	(C)	33.95
Fortress	(C)	29.50
Compass/Master		29.95
Samplenuggets		55.95
Playa West	(C)	62.75
Dynacore 88*	(C)	45.95
Sargon II (Chess)	(C)	16.95

BOOKS

De Re Atari	12.00
Atari Collection Vol. 1	11.95
Mapping the Atari	13.95
Atari Basic Tutorial	11.95
Atari XL Handbook	5.95
Technical Reference Notes	17.00
Atari & Graphics Design	12.95
Hardware Handbook	4.95
Exploring Adventures	6.95
+ 750 cards & packing	

NEW US IMPORTS

Paperclip	59.95
Scorcher	49.95
9-Gang	89.95
Protektor	29.95
Boasting 8	34.95
Savage Climb of Gold	32.95
Crusade of Europe	35.95
Midnight	19.95
Rescue from Fracture	34.95
Ballbreaker	24.95

ENTERTAINMENT

BC's Quest for Times	(R)	14.95
Boulder Dash	(C/D)	14.95
Peridot Constructor EA	Phone	
Brace Lee	(C/D)	14.95
Cosmos	(C)	14.95
Music Constructor EA	Phone	
Crashout	(C/D)	9.95/14.95
Dropout	(C)	19.95
One on One	(C/D)	9.95/12.95
H.B. R.C.	(R)	19.95
Knight's Maze	(C)	9.95
Bounty Bob	(C)	9.95
Maver 2049'er	(C)	12.95
Mr. Do	(C)	9.95
Pay Man	(C)	9.95
Pistol 11	(R)	19.95
Quasmo	(C/D)	9.95/14.95
Smooth Hire 1	(C)	14.95/12.95
Smooth Hire 11	(C)	14.95/12.95
Smooth Hire 111	(C)	14.95/12.95
Hijack	(C/D)	7.95/10.95
Summer Games	(C)	23.50

ADVENTURE

Adventure Guild		9.95
Ultima III-Rexxus		19.95
Out Throats	(C)	29.95
Deadline	(C)	27.95
Dungeon Adventure	(C)	9.95
Enchanted Isle	(C)	9.95
Excalibur	(C)	27.95
Highlanders Guide to the Celts	(C)	29.95
The Halls	(C/D)	9.95/17.95
Infidel	(C)	29.95
Loch of Time	(C)	9.95
Mark of the Sun	(C)	43.95
Molester	(C)	7.95
Page 1 - 5	(C)	17.95
Revelation	(C)	32.95
Sorcerer	(C)	29.95
Starlord	(C)	32.95
Suspect	(C)	27.95
Suspected	(C)	27.95
Waldinger (Infidel)		29.95
Witness	(C)	27.95
Book 1, 11, 111		29.95

INFOCOM'S INVISICLES

Watch Hikers Guide	6.95
Out Throats	6.95
Suspect	6.95

Available Now

ALL OTHER TITLES ALSO AVAILABLE
AT THE SAME PRICE

82050

One Disk Drive

8" W H-Ret. Monitor

749.95

Cybernetic Computer

Blue Man 2001

Dumbwits

Electrician

Kennedy Approach

New York City

Monday Morning Manager

UTILITY

Basic Routines	(C/D)	1.95/11.95
Action	(R)	25.00
Action Tool Kit	(C)	27.95
Base XL	(R)	60.00
Base XL, Tool Kit	(C)	27.95
DOCS XL		27.95
MAC 88	(R)	75.00
MAC 88 Tool Kit	(C)	27.95
Schema DOCS	(C)	29.95
Base XL	(R)	75.00

NEW SERVICE

Custom software programming. We can write software tailored to your needs, at very competitive prices.

PHONE US NOW

SEND SAE FOR OUR PRICE LIST.
31 STONEYHURST ROAD
ERDINGTON, BIRMINGHAM B24 8HA

HOTLINE
(021) 384 5080

NEWSLETTER

£1½m computer to the rescue

THE phenomenal growth of MicroLink has hastened the purchase of additional computer power by Telecom Gold.

Demand for the new electronic mail service has been such that despite the installation of processing power of a prime computer, at certain times of the day users have been inconvenienced by automatic file compression caused by the large volume of traffic.

Since it started, MicroLink has had to share its computer with the satellite video members of the European Parliament. The traffic jam

worsened as subscribers from all over Britain and Europe and as far away as Australia and Japan began logging on to increasing numbers.

With MicroLink growing at more than four times the predicted rate, the result left it no option but to request a separate computer for its exclusive use.

Telecom Gold has come to the rescue and on September 1 MicroLink will be moving to its own £100,000 dedicated system - worth to the total of its own users and the Euro MPs.

The move will enable

MicroLink to provide an increasing number of mailing facilities, together with a response time described by its systems manager, Colin Knapman, as "super quick". Telecom Gold officials have been staggered by what they describe as "the phenomenal of a specialist service growing to big in such a short time".

Knapman believes he knows exactly why MicroLink has taken off so dramatically.

"It's more friendly than other electronic mail services. It's informative, and it's fun to use", he says.

It's all systems go...

THE ever-ready Help Line came to the assistance of a distinguished, daily MicroLink subscriber, Conservative MP for Aston Sir George Young.

He explained today: "The system does not work when it is in the Telecom Gold mode. The new lines simply superimpose on the old, making it very difficult to read messages."

"I have a BBC Micro with a Telecom 7 modem and a Microsoft 800 KROM. To access Telecom Gold I have to generate a new Rotam signal. What am I doing wrong?"

What Sir George was doing wrong was trying to access the service using Microsoft 800 software.

Help Line was able to give him two options - either get a Comshare 800M, which has both Personal and Terminal emulations, or keep the Microsoft 800 KROM and use it with a terminal emulation program such as Term.

Shortly afterwards Sir George was able to report "all systems go" at the end of the system.

Popular abroad

NOT only is MicroLink the first new national electronic mail service - it's also making a name for itself on the international scene.

On the Continent there are already subscribers in Belgium, France, Luxembourg, Spain, Switzerland and West Germany.

Further afield are its members in South Arabia, Australia, New Zealand and Japan.

There are even a couple of subscribers stationed at British Forces bases in

Germany, in addition to those in the UK and the Republic of Ireland whose numbers increase daily.

Why is MicroLink so popular abroad?

Says one happy customer:

"It's a very good way of sending information by the international PDS system, it's faster and more economical than tele, and it's portable."

"I can take my laptop computer just about anywhere and still be in touch with MicroLink - at any time of the day or night."

Showing 'em how

MICROLINK will be making up another first when it goes online from the Liverpool 6 BBC Micro User Show in Manchester.

A conference demonstration of the new service will be held at UMIST from September 27 to 29, with experts on hand to assist the full potential of users.

Shorter than the show will be sponsored live over MicroLink's own electronic news pages during the three-day event.

MicroLink forges commercial ties

NEW commercial ties between Britain and Japan are being forged by MicroLink's speed and efficiency.

For several years British electronics engineer Jeff Gearing has been UK correspondent of a Japanese mailing magazine, regularly sending his news reports by mail on floppy discs to its editor, Toshihiro Ishikawa.

Other than expensive long distance phone calls, the two men had to rely on the five-day minimum airmail service to keep in touch.

Until MicroLink, that is.

New links Gearing and Ishikawa are subscribers of the fast-growing international mail service, and news about Britain's motor industry goes to Japan in

seconds rather than days.

MicroLink has paid off for them in another way - high-speed two-way exchanges of up-to-the-minute business information that can be sold as a service to commercial concerns.

And this has led to a further profitable spin-off.

For some time Gearing and Ishikawa had been aware that there was a

demand in Japan for luxury European goods, and in Britain for Japanese-made models.

MicroLink is now providing the fast, low-cost medium for import/export orders resulting in an increasing flow of Wedgwood pottery from Bristol and radio-controlled models from Tokyo.

STRAIGHT to work this month. Have a look at Program 1. I don't think it should cause you too many problems.

We're just assigning the values 1, 2, 3 to three numeric variables, **NUMBERONE**, **NUMBERTWO**, **NUMBERTHREE**, and printing out the value of the variable immediately after each assignment.

```
10 REM PROGRAM 1
20 PRINT "HELLO!"
30 NUMBERONE=1
40 PRINT NUMBERONE
50 NUMBERTWO=2
60 PRINT NUMBERTWO
70 NUMBERTHREE=3
80 PRINT NUMBERTHREE
```

Program 1

The end result is that:

1
2
3

appears on our screen. Along-veined way of doing things, I admit, but easy enough to follow.

Program 1 is a different kettle of fish, but, believe it or not, its output is exactly the same as in Program 1.

It's sensible enough down to line 40. We clear the screen in line 20, assign the value 1 to numeric variable **NUMBER** in line 30, then **PRINT NUMBER** in line 40.

Line 50 looks decidedly odd, though:

```
50 NUMBER = NUMBER + 1
```

How can a number be equal to itself plus one? That's what line 50 seems to be saying, after all.

The fact is that equals sign doesn't mean equals here — it just tells the computer to do something. The equals sign instructs the computer to do whatever task is given on its right

```
10 REM PROGRAM 11
20 PRINT "HELLO!"
30 NUMBER=1
40 PRINT NUMBER
50 NUMBER=NUMBER+1
60 PRINT NUMBER
70 NUMBER=NUMBER+1
80 PRINT NUMBER
```

Program 11

When equals doesn't make all things equal...

and then label the result of that task with the label on its left.

In this case the micro interprets line 50 as starting on the right of the equals sign, take the value labelled by **NUMBER** and add one to it. Then label the answer with the variable **NUMBER**. The micro doesn't bother

assign the result to the label on the left.

Let's take this idea a little further. Have a look at Program 11. The first five lines should be fairly familiar.

When we run it the screen clears, line 20, we set **NUMBER** equal to zero, line 30, increase it by one, line 40, and then print it, line 50. Since **NUMBER** was zero, and we've increased it by one, the result will be that 1 appears on the screen.

Once the program's done this, we come to line 60 which reads:

```
60 GOTO 40
```

As you'll recall, the **GOTO 40** tells the micro to make line 40 the next line it does. This increases **NUMBER** by one, as we've seen, so **NUMBER** takes the value two. Line 50 then prints out the 2 and we encounter line 60 again.

This sends us back to line 40, which increases **NUMBER**. Line 50 prints out the new figure, 3, then we're back at line 60, which takes us to line 40, which increases **NUMBER**, and so on.

I think you can see that the program will produce the steady

```
10 REM PROGRAM 11
20 PRINT "HELLO!"
30 NUMBER=0
40 NUMBER=NUMBER+1
50 PRINT NUMBER
60 GOTO 40
```

Program 11

**Programming
made easy
— Part V of
MIKE BIBBY's
guide through
the micro jungle**

that the same label has been used on both sides, it just updates **NUMBER** with its new value.

The practical effect of line 50 is to increase **NUMBER** by one — to two. Line 60 then duly prints out this new value of **NUMBER**.

Line 70 is identical to line 50. Starting at the right of the equals sign it takes the value of **NUMBER**, increases it by one, then re-labels it with **NUMBER**. That is, **NUMBER** increases from two to three. Line 80 then prints out the new value of **NUMBER**.

The thing to remember is that the equals sign doesn't mean equals — it means assign. You "do" what's on the right of the equals sign, and then

increasing sequence of numbers 1, 2, 3, 4, 5, 6, 7 and so on.

Try running it and see. You'll probably be glad to know that the way to break out of the program is by the only named Break key.

If you simply want to freeze things for a moment while you examine the output, press the Control and the 1 (one) key at the same time — we write this as "press Control+1". To restart things simply press Control+1 again.

As we've mentioned, when a program keeps going round in circles like this, we call it a loop. We can then make statements such as *NUMBER* increase by one each time round the loop.

If you press Break, or freeze it quickly enough after the start of the program, you'll see that the first value of *NUMBER* printed out is one, and not zero as you might think. All right, we assigned zero to *NUMBER* in line 30, but we increased it by one immediately, before ever printing it out.

But what if we wanted the zero printing out? Well, a sneaky method would be to make line 30 of Program 5:

```
30 NUMBER = 1
```

What happens here is that line 40 immediately increases *NUMBER* by one, to make it zero ($1 + 1 = 0$). Line 50 then prints it out.

```
10 REM PROGRAM 27
20 PRINT CHR$(1225)
30 NUMBER = 0
40 PRINT NUMBER
50 NUMBER = NUMBER + 1
60 GOTO 40
```

Program 27

Another very round is just to swap lines 40 and 50, so we PRINT before we increase *NUMBER*. This is what I've done in Program 26. Try running it and you'll see — if you're quick enough — that 0 does appear on your screen.

```
10 REM PROGRAM 26
20 PRINT CHR$(1225)
30 NUMBER = 0
40 PRINT NUMBER
50 NUMBER = NUMBER + 1
60 GOTO 40
```

Program 26

Actually we don't need to go up in steps of one. Have a look at line 50 of Program 5:

```
50 NUMBER = NUMBER + 3
```

Remembering that micros start on the right of the equals sign, the Atari takes the value labelled by *NUMBER*, adds three to it, and gives the result the label *NUMBER*. The effect is that line 50 increases the value of *NUMBER* by three each time round the loop, so numbers are printed out on our screen going up in steps of three.

Nor do the numbers always have to be getting larger. Program 6, as

```
10 REM PROGRAM 6
20 PRINT CHR$(1225)
30 NUMBER = 1000
40 PRINT NUMBER
50 NUMBER = NUMBER - 1
60 GOTO 40
```

Program 6

you'll see without too much difficulty, starts at 1000, then prints out 999, 998, 997 and so on. The trick here is line 50:

```
50 NUMBER = NUMBER - 1
```

The running it if you won't take my word for it!

In fact we can write a general program that will start at any number and go up or down in whatever steps we want by using the INPUT statement we met last month. Program 70 does the trick.

First of all the program asks us the number we want to start printing from — which we label *START*. Notice how line 30 politely prints out a message to tell us what we're supposed to INPUT. Line 40 does the

```
10 REM PROGRAM 70
20 PRINT CHR$(1225)
30 PRINT "NUMBER to START at?":
40 INPUT START
50 PRINT "To FROG at?":
60 INPUT INCREMENT
70 NUMBER = START
80 PRINT NUMBER
90 NUMBER = NUMBER + INCREMENT
100 GOTO 80
```

Program 70

actual INPUT, labelling it as *START*. Lines 50 and 60 then prompt for, and INPUT the increment, or step, by which we want the numbers to go up, labelling it *INCREMENT*.

We then get down to business. Line 70 assigns the value of *START* to *NUMBER*. We then print this value of *NUMBER* in line 80, so we're off to a good start. If you'll pardon the pun.

We then have to increase *NUMBER* by the value of *INCREMENT* to get the next value. Line 90 then jumps back to 80, which then prints the updated value. Line 90 then increases it again by *INCREMENT* and so on.

If you have difficulty visualising this try substituting some of real numbers for *START* and *INCREMENT* and see what happens as you go round the loop.

For instance, if you mentally input 25 for *START* and 5 for *INCREMENT*, line 70 would give *NUMBER* the value 25, which line 80 would then print out. Line 90 would then add 5 to this, giving *NUMBER* the value 30 then we'd loop back to 80 via 100. The figure 30 would then be printed out, line 90 would increase it by 5 again, and so on.

All well and good, but having to escape from these loops by pressing Break isn't very elegant is it? Ideally the program should stop of its own accord. In other words, we should give it a condition to finish on. The loops we've met so far haven't had any finishing condition so they're known as unconditional loops.

We need to create a conditional loop, and Program 70 shows us how we go about it.

```
10 REM PROGRAM 70.1
20 PRINT CHR$(1225)
30 "It'll keep on going
until you enter 999"
40 INPUT NUMBER
50 IF NUMBER > 999 THEN STOP
60 GOTO 30
```

Program 70.1

The idea is that we keep on looping round, printing out the same fringe message, until we enter 999. That is, the condition for ending the loop is that we INPUT 999 — any other

number will cause the loop to be repeated.

Let's see how we achieve this: Line 20 clears the screen, then line 30 prompts for the INPUT, saying the program will keep on going until 999 is entered.

On case you're wondering what the T is in line 30, it's the Atari's abbreviation for PRINT, if you want to substitute ? for PRINT, then go ahead. I prefer the clarity spelling it out gives you.

Line 40 then INPUTs into the variable NUMBER. Line 50 is the heart of the matter — this is where we test for our condition. It reads:

```
50 IF NUMBER=999 THEN STOP
```

This uses the IF...THEN statement, one we haven't met before. It reads:

If some condition is TRUE, do what follows the THEN.
If that condition isn't TRUE, ignore what's after the THEN and carry on with the next line.
In the case of line 50, this boils down to:

If NUMBER does indeed equal 999 THEN STOP.
If NUMBER isn't 999, THEN skip through to the next line — line 60 in this case.

So if when prompted by line 30, we'd INPUT a value of 999 for NUMBER, we would do what's after THEN and STOP.

We haven't met STOP before, but I don't think you'll be too surprised to learn that it stops the machine dead in its tracks. It also prints out a message indicating the line it was stopped at. In this case it would be STOPPED AT LINE 50.

If, however, we entered a value for NUMBER other than 999, our condition hasn't been met, so we carry on with the next line of the program, line 60, which then sends us back to our prompt for INPUT again.

In other words, the IF...THEN statement assures that we keep on looping until we enter the number 999. We've got ourselves a conditional loop!

Actually there are other ways of stopping it, such as pressing Break or entering a word when it's expecting a number. For the moment we'll assume that you're good-mannered

enough to avoid this. Later on we'll see how to "test" proof" our input, as it's known.

The resulting Program VIII, and enter 999 to stop it. Then enter:

CON

The program will restart — CONT stands for continue. The same trick works after you've pressed Break.

The IF...THEN statement isn't too hard to use, just remember:

- The condition you're testing for comes directly after the IF.
- You can put any valid Basic instruction after the THEN.
- The instruction after the THEN is

Smaller numbers at the sharp end...!

only carried out if the condition has been met — that is, if it's true.

- If the condition is not true, the micro ignores what's after the THEN and continues with the next line of the program.

Take a look at Program IX now. This does exactly the same job as Program VII but in a different way. This time we test to see if the number is NOT equal to 999, and, if this is so, we loop back to our prompt for INPUT. Lines 20 to 40 are identical. The vital bits are lines 50 and 60.

Line 60 reads:

```
60 IF NUMBER<=999 THEN GOTO 30
```

Here our condition is that

```
10 REM PROGRAM IX
20 PRINT CHR$(128)
30 ? "You'll keep on going
until you enter 999"
40 INPUT NUMBER
50 IF NUMBER<=999 THEN GOTO 30
60 END
```

Program IX

NUMBER isn't equal to 999. That's what < > means — not equal to. And if our condition's true — that is, NUMBER isn't equal to 999 — we THEN loop back to line 30.

On the other hand, if the condition in line 30 isn't met — that is, NUMBER is 999 — we simply drop through to line 60, which reads:

```
60 END
```

We met this before. As its name suggests, it simply ends processing, this time without any message, unlike STOP.

The not equal to symbol, < >, may be new to you. It's just one of a set of inequalities, as they're known, that come in very useful in combination with IF...THEN statements. Table I summarizes them.

If you're anything like me, you'll get confused between > and <. The trick is to remember that, for both symbols, the larger number goes opposite the bigger end of the symbol, whereas the smaller number goes opposite the sharp, or smaller, end. It may not be the way kinemists remembered it, but it's good enough for me!

Program X uses what we've learned about IF...THEN statements, as they're known, to add a finishing point to Program VII. Lines 10 to 40 are identical. We clear the

Inequality

=
>
<
< >
=>
<=

Meaning

equal
greater than
less than
not equal to
greater than or equal to
less than or equal to

Example

7=7 is true, 8=7 is false
7>5 is true, 3>4 is false
3<4 is true, 7<2 is false
4< 14 is true, 4< 14 is false
8<=5 is true, 8<=5 is false
7<=7 is true, 3<=8 is false

Table I: Inequalities

screen and INPUT a value for START, the number we start from.

Lines 80 and 90 then prompt for and INPUT the number we wish to end at, FINISH, 70 and 80 then INPUT INCREMENT, the value of our step. As in program Y8, the value of START is assigned to NUMBER, line 90, and then printed, line 100. Next, we increase the value of NUMBER by INCREMENT and store it in NUMBER again at line 110.

Line 120 is the crucial:

```
120 IF NUMBER<FINISH THEN GOTO
```

What this says is, if we've incremented NUMBER past FINISH end the program here and now. If not, then continue with the next line, which will loop back to 100 and print the newly-incremented number.

Notice that if we have exceeded the limit we don't actually print that value of NUMBER since we don't loop back to the PRINT statement at

```
20 REM PROGRAM X
20 PRINT CHR$(123)
20 PRINT "Number to start at?":
40 INPUT START
50 PRINT "Number to finish at?":
60 INPUT FINISH
70 PRINT "Increment at?":
80 INPUT INCREMENT
90 NUMBER=START
100 PRINT NUMBER
100 NUMBER=NUMBER+INCREMENT
120 IF NUMBER<FINISH THEN GOTO
120 GOTO 100
```

Program X

line 100.

Experiment with different values for START, FINISH and INCREMENT and see if you can understand what's happening. This program is quite fundamental, and we'll be using its ideas a lot, so it's worth an effort.

For instance, if you start at 25, set

the finish to 35 and prescribe a step of 5, you'll get:

25
30
35

on your screen.

However a start of 50 and a finish of 55 with an increment of 3 will result in:

50
53

You won't see a 56, because it exceeds our limit.

What happens if the start and finish numbers are the same, or the increment is negative? In fact, will the program work with negative numbers? And what would happen if we choose an increment of zero? Find out!

■ Well that's all for this month. Next month we'll be continuing with loops, but in an entirely different way.

CENTRONICS INTERFACE



- Transparent to all s/w - no driver programme necessary
- Connect direct to 600 or 800/XL or 130 XE - or to disc drive if fitted

FCC

SYSTEMS LIMITED

£59.99

THE LODGE
MOORLANDS ROAD
BEPRIOTT
SOMERSET TA11 9NP
TEL: 03003966 (0483) 73447
PRESTEL MAILBOX 046073442

+ P&P at £1.00
and VAT



DEALER ENQUIRIES MOST WELCOME

... with the Multi-System/Datanet modern serial interface plus software package from Miracore Technology.

This unique-compact package gives ATANS[®] users full Prestel[®] facilities, including graphics, and allows access to Micronet[®], Videotext systems, telex, electronic mail, bulletin boards and databases. Datanet handles baud rates of 1200/75, 18/1200, 1200/1200, 300/300. RS2 interface not required.

For models 480, 680, 800SL, 800XL, 800SL, 800SLM and 1200SL used with suitable modems.

To get your ATANS on-line, all the way, clip the coupon today.

Please send me:
☐ Multi-System/Datanet package @ £59.99
our staff - in return P&P
☐ enclosed cheque/postal order
☐ charge my Access/Visa card/no

expiry date:

Name:

Address:

Postcode:

signed by:

Alan Sargent, S. Miracore Technology (UK) Ltd,
10, Park Street, Ipswich, IP1 1AE,
Tel: 0479 31401

Copyright © 1985 of the Miracore Technology Group

FULL PRESTEL FOR ATARI USERS!

MIRACORE TECHNOLOGY



Bruce Banner in a tight spot



The transformation from Hulk to Bruce

Setting the standard for adventure graphics

As promised last month, let's take a look at the Scott Adams Quest Probe series. Unfortunately, *The Fantastic Four* — next in the series of Marvel Super Heroes to be put into adventure form — has not yet arrived from Adventure International so I shall only be able to look at the first two games of the series, *The Incredible Hulk* and *Spiderman*.

The Quest Probe series is Scott Adams' first major venture into graphics from the off, although his earlier games have had graphics added in some cases. Hence the games are available either as text only cassettes or on disc with graphics, with a commensurate price difference.

The graphic versions also contain a "graphics off" command for any text fans who prefer the faster loading of discs.

Now I have in earlier columns expressed my views on what graphics add to and subtract from a game. In the case of Quest Probe I have to say that the graphics do add to the game for two main reasons.

Firstly the characters portrayed are cartoon characters in their own right. Hence the impression given in the

BRILLIG takes a first look at adventures inspired by those Marvel comic heroes

games is an entirely accurate one, and nothing jars with the players' perception of the central figure. This is reinforced by the inclusion of an actual Marvel comic in the package, designed to introduce the characters to newcomers.

Secondly the text in the games tends to be fairly sparse and a little repetitive, presumably a reflection on the amount of memory taken up by the graphics. For instance, in *The Hulk* most of the action takes place in or around a series of large domes, while in *Spiderman* the action takes place in a large office building.

The graphics themselves, particularly in *The Hulk*, are the best I have seen in any Atari adventure, giving an excellent representation of the original cartoon characters. If graphic adventures are to be the way forward then this is the standard to beat for any new contenders.

The games have a slightly disappointing quality, in that the actual

story line behind each is similar, as you send your Super Hero on a gem-collecting mission. I feel that with a little more imagination and variety the characters could have been set some slightly more challeng-



What you need is a point of reference

ing tasks to test their amazing powers.

The Quest Probe series to date provides some good challenging hunt-and-find problems and as this is an interconnected series it will presumably follow the same pattern in the Fantastic Four. Worth buying for the graphics for sure, and one Scott Adams adventure is worth a look, but the text only versions are a little on the dry side.

Now on to some of the nitty gritty adventuring problems. Picture the scene. There you are strolling contentedly through your adventure, a nice full inventory, when suddenly everything looks the same. No matter which exit you take your surroundings never vary. In short you have hit what every adventurer dreads - a maze.

This is the sort of problem that is going to confront you in probably seven games out of ten, so we had better make sure that there is a way of dealing with it.

Richard Burke, of Gwent, has come up against just such a problem in *Escape from Pulsar 7*, written by Brian Howarth as one of the Mysterious Adventures now marketed by Adventure International.

Richard's problem is that he cannot open the locker in the storeroom, or indeed always find the storeroom. The storeroom in *Pulsar 7*

forms part of a double maze in the game.

The first part of the maze is that several rooms are exits from a series of air ducts. The second part, in common with several of the other Mysterious Adventures, is the total lack of geographical logic in the game.

In adventures today there is absolutely no excuse for an exit leading north to a location and yet the south exit from that new location leading somewhere completely different. This is the case in *Pulsar 7*, and probably explains why Richard cannot always find the storeroom.

The brilliant patent maze mapping method can, however, solve the problems caused by encountering games writers with no sense of direction. The first sign of a maze is when, despite the plethora of exits in many directions, the player cannot appear to move. The location description remains the same. But has the location?

The problem is that you cannot tell. Everything looks the same. What you need is a point of reference, so start

with where you are and call that No 1.

All you have to do is drop an item from the inventory, such as a pencil, to identify location No 1. Now go through the available exits, and every time you can still see the pencil you have dropped, mark a dot against that exit. It obviously leads nowhere.

If you cannot see the pencil, then you have moved, so drop another item and repeat the process. Continue this until you have mapped the whole maze, and from then on it will be a piece of cake to pick your way through it.

In the case of *Pulsar 7* I suggest you name each location after the inventory item you drop, as the geography of the maze is pure nonsense. But by persistence with my method I can promise Richard will find something that will be a smash hit with that locker.

Mind you, some adventure writers have got smart to this system, so don't be too surprised if your mapping items start disappearing while you are away.

Jerry Pearson's *Curse of Crowley Manor* is the Other Venture causing James Chagman problems, being stuck in the numerical lock room with a monstrous creature. Well, James, follow Rule Number One and examine everything in an adventure, including your transportation to the manor, and you may find some useful liquid refreshment.

Finally a letter from M. Woodgate asks me to commit an act of heresy and recommend a good disc adventure that is not from Infocom.

I see from his letter that he already has Atari's *The Pay-Off* and that he is considering *Mask of the Sun* by Broderbund - which is no bad choice.

Can I also suggest the Ultima series II to IV if a graphic adventure is what he is after. They should keep him busy for a few months.

Since Adventure International has featured as the bulk of this article Steve Collin, of Prosa, wins an Atari User T shirt for his "Glitch of the



Sparkling arcade game is fast – and fun...

ONE of the classic arcade games, often emulated but never in my opinion surpassed, is **Boulderdash**.

The concept is simple: You control Rockford, a handy little man who whizzes through the boulder-strewn sub soil collecting diamonds as fast as his little paws will carry him.

Collect enough diamonds and a door opens up. Reach the door to be transported to the next level up, and start again in a different cave.

In practice it isn't that simple – is it ever? – as there is a stringent time limit with a really off-putting, panic-inducing 10-second countdown.

Rockford is well aware of this, so any pause in the action leaves him frowning and tapping his foot impatiently.

This is quite apart from the fact that the more talented you remain the more Rockford is likely to shove a boulder on his head as he strives for the next gem.

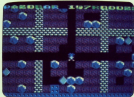
The caves themselves are

of varying degrees of difficulty, from not too easy to downright impossible.

Cave A tells you where rooms around and acclimates to the perils of the plummeting boulders you inadvertently incite. Cave B does more of the same, while Cave C whips me out for about a fortnight as I struggled to clear all 24 diamonds and find the exit in time.

Expert boulderdashers have shown me that there is a technique to every screen, although to assist the unworthy there is a facility to flip forward four caves at a time, or a pause button to allow you to plan your route through the earth.

Tapping butterflies which



turn into diamonds when you casually drop a rock on their heads is a theme in several caves, together with flooding them and avoiding nasty little "wings" set to chase you around the screen.

The whole game is tension-dousing pieces fun and an absolute must for any Atari owner. And if this doesn't leave you exhausted Boulderdash it is coming. Buy it!

Pete Greenman

HIJACK'S ALL RIGHT, JACK!

IT'S a good job English Software released **Hijack** before the Strife Muslims decided to play the game for real. Otherwise they might have laid themselves open to charges of opportunism.

As it is, the worst one could level against them is a charge of premeditated plagiarism.

If you ever saw Broderbund's *Choplifter*, then **Hijack** will give you a remarkable feeling of déjà vu.

The innovative aspect of the scenario is that it is a train that has been hijacked.

"By this train to Wiganston" doesn't sound quite right, does it?

There are 10 VIPs aboard the train and your job as a chopper pilot is to pick them off the roof of the train and deposit them in the safety of the rear carriage. Meanwhile,

of course, there are hazards to be avoided.

Gun fire at you and trees suddenly offer themselves as targets for you to crash into. It's like learning to drive all

over again!

The title page is accompanied by a jolly rendition of the Runaway Train, but the game sounds consist largely of the tacky-tack-



tack helicopter noise and whizz-boom gunshots.

One nice feature is that following a wipe-out you can start from the level you were on when killed. You can also restart from the beginning if you really want to.

It's not one of the most compulsive games I've ever played. In fact in my opinion the cleverest part is the way the title is written in an appropriate shape on the credits inter.

It's a lot more colourful than *Choplifter*, and if you never saw Broderbund's classic you may well love **Hijack**. For my money, though, I prefer the original.

Taking of money, the 48k cassette costs £7.95 and the 64k version is £10.95.

Dave Russell

Magick moments in Festeron

ONCE upon a time there was a nasty Queen who, as the late governing fairy stories dictates, had a beautiful and virtuous stepdaughter.

Now the Queen, being the crabby, cantankerous and malicious monarch that she was, decreed that no one should marry the fair Princess Manning Star until they first proved themselves worthy.

Naturally Queenside devised tests that would ensure that none of the magic knights that sought the Princess's hand would live to tell the tale. One besotted wretch was even sent deep into the hills of Menden, there to slay a Gnu and drag the carcass up where all might see it.

Now any infomorn adventurer worth his or her salt could have told the poor sucker that he'd have been better off staying at home reading a good magazine like *Amor User* but no — off he went. Gortense soon overcame the hapless knight who, lost without a lamp, was soon devoured by a lurking Gnu.

Since nobody ever survived the trials, the Princess was condemned to a life of loneliness and died without ever seeing a single knight make it to the finals.

Many kingdoms later, a scholar happened to be rummaging through the ruined tomes of warlords and chieftans across a glowing object amid the dust and disrepair.

It was the Princess's heart, having long since turned to stone but shining brightly with the unfulfilled wishes of a lifetime. And that, dear reader, was how the Magick Stone of Dreams was discovered.

In *Wishbringer*, from

infomorn, you begin not as a knight in shining armour but as a humble Post Office worker. The game begins atop a hillside in the coastal town of Festeron.

You may wish to explore the town before or after going to the post office — the cinema, cemetery, police station, light-house, pleasure wharf, park, library and church are well worth a visit.

Your boss, Mr Grog, is not



the most pleasant of postmasters — when you first meet him, he's reading other people's postcards — and will tell you in no uncertain terms what he thinks of you.

Your first job is to deliver a letter to the proprietor of Ye Old Magick Shoppe, who up on a cliff top on the other side of town. You can't afford to hang about too long — the Magick Shoppe shuts at 8pm and the game starts at 9pm.

Getting there can present a problem. The base of all messengers in the shape of a vicious pooble blocks the main route, and even if you do manage to pacify the Pooble doesn't stay tranquil for long.

Once at the Magick Shoppe an old lady who is as hagler-



looking and pale "in a faded signature in an antique book" receives your delivered letter.

She is clearly upset when she sees the writing on the envelope: "It has been a long, long time since I last saw this handwriting. Hoped I never would again".

The letter turns out to be a ransom note. Somebody signing himself as the Evil One has kidnapped the old lady's cat and wants the Magick Stone in return.

The lady is evidently distressed. In a voice brimming with emotion, she whispers "Many seek to gain the Stone of Dreams yet few can imagine the price. For years I have fought to

conceal it from the Evil One and others like her.

"My youth, my home and family all were forfeited for its protection. And now, now it



claims my only companion!"

Guess who's about to be entranced with the Stone and the task of rescuing Chaco the cat? Right first time!

Before you know it, you're thrust out of the shop and into thick fog. When you peer through it, all you can see is the summit of Post Office hill. Only trouble is, there's now a massive tower where the Post Office used to be.

If you make it through the fog without falling to your death off the cliff, you'll find the whole scene has changed. Where birds once sang, wraiths now shriek. Trolls lurk. Your beloved town now seems to be in the grip of decay and despair.

And if you thought a nip on the mover seat from a poofie was bad enough, what are you going to think about being chased up by the enigmatic hellhound which has usurped the poofie's position?

Fortunately, the Magick Stone—Widdinger's—can help. With it, you can wish for advice, darkness, flight, freedom, lust, strength and sale. You can only wish once for each, so must choose the occasion with care.

You must also have certain objects in order to make the wish effective. For example, to wish for darkness you must first have drunk some Grael's milk.

Widdinger is ranked as an introductory level adventure—the other Infocom gradings in order of difficulty are standard, advanced and expert—which means it is more suitable for the apprentice adventures. Nevertheless, even seasoned adventurers will find it a joy to play.

The package comes handsomely boxed with glossy manual, map and your very own Widdinger stone.

Widdinger is not intended as the sequel to the marvellous Sorcerer and Enchanter as some people thought it might be—but pleasure is still to come.

Not once again Infocom has come up trumps. Widdinger is filled with humour, excitement, detail and atmosphere.

It maintains its high standards and keeps Infocom in pole position as the best adventure publishers in the world. Definitely not to be missed.

Bob Chappell



Some of the best at a fraction of the price

I've got some good news and some bad news.

First the bad news. If, like me, you were one of the first to spend your hard-earned cash on an old 800, then you might be forgiven for thinking that you had some terrible personal problem when it came to buying cheap-quality software.

But this is where the good news comes in. Now, thanks to a few enterprising software dealers and the growing potential of our own software writers, we can at last enjoy some of the best Atari software at a portion of the price.

Anachron by Electronic Arts, is one of these classics to filter through. It's distributed in the UK by Aristonsoft and costs £11.99 tape or £14.95 disc. It is at first glance similar to chess, not only in its board layout but in the movements of some of its players.

But that is where the similarity ends.

Anachron is a two-player game. The main screen is a checkered board, of light and dark squares.

There are also squares which vary between light and dark, but most important there are the power points—five squares which, if totally controlled by one side, will end the game.

The second screen is the scene of fierce battles in

decide the right to own a square.

So much for the layout. Now on with the game itself.

Anachron can either be a one or two player game.

You are given the choice of being either the light force or the dark force—and this is where the squares matter.

If you are the light side, the light squares will give you more strength than the dark squares and vice versa for the dark side.

The revolving squares will give a different amount of strength depending on your colour and its colour.

Each side has an army of equal strength but differed in their fighting styles. Thus tactics play a major part in **Anachron**.

The most important element is the Wizard who can cast spells ranging from healing your player to reviving a dead piece.

This usually encourages an onslaught on the Wizard from the word go, but I can praise a very costly attack, and is

generally not preferred by the more experienced player.

My only complaint about this excellent game is that you do not have any skill-level selection in the one-player mode so I found myself beating the computer time after time.

The manual is well laid out giving hints on playing the game and a thorough explanation of your spell-casting ability.

The one I received was a Commodore 88 version which was accompanied by a photocopy of the Atari key-functions. I find this a touch strange as **Anachron** was released first on the Atari, then on the 88. Perhaps this was a pre-release version of the manual.

All in all an original game, well written and a pleasure to play.

Paul Irvine

■ The review of **M.U.D.B.** in the July issue was also by Paul Irvine and we're sorry we only managed to get 60 per cent of his name right!

We looked last month at Modes 3, 5 and 7 and saw how they were four-colour modes. This month we'll take a look at the modes we missed out, 4 and 6.

These are still "map" modes, but they only allow two colours to be used. If you're wondering why anyone should want to limit themselves to two colours, the answer is merely: By way of a slight digression, let's see why this should be so.

We talk about a bit of information and because the word bit is used in everyday language it's easy to forget that it has a precise meaning in this context.

When someone offers you some more food and you say "Well, maybe just a bit more, please", you're using the word in a very imprecise way.

In information processing terms, bit is a contraction of the two words binary digit. We say that one bit of information has been transmitted if the number of possible outcomes has been halved.

Suppose I toss a coin and tell you that the outcome is heads. I've given you one bit of information because I've reduced the possibilities from two to one. Before I transmitted any information, the outcome could have been heads or tails.

Suppose your task is to guess which square on an otherwise empty chess-board contains a pawn. If I tell you that it isn't in the left-hand half of the board, once again I've given you one bit of information.

In the case of the chess board I've reduced the possibilities from 64 to 32. With the coin I reduced the possibilities from two to one. In both cases I have provided the same amount of information — one bit.

If you've been following Mike Biles's 88 Wise series, you'll be quite familiar with binary notation, so let's work our way back towards the graphics screen.

If you think about a simple black-and-white screen, each pixel can either be white — 11 — or black — 00. That is, we can describe the pixel's state using only one binary digit. Let's say 1 represents 11 and 0 represents 00.

We could now describe a complete screen as a string of 1s and 0s and we

Hi-res graphics in modes 4 and 6

*Part Five of DAVE RUSSELL's
Introduction to Atari graphics*

could store this information in memory.

Suppose now we have the option of each pixel not only being lit but being coloured red. That is, each pixel can be lit or unlit, and if it can be white or red.

Our single binary digit can't convey all this information, so we need to introduce another one. We could then describe each pixel's state as 00 — unlit, 01 — white lit — or 11 — red lit. There is another possible combination, 10 — red unlit — but in this case it doesn't make much sense.

It's easy to see that if we wanted to describe a screen containing this much information we'd need a bigger string of 1s and 0s. If even more colours were possible, we'd need an even bigger string.

This information is held in the video's RAM memory and so we can see that if we want more colours available we have to allocate more memory to hold the possible colour

information.

The other variable in the equation is the size of the pixel or the resolution. A high resolution screen has many pixels per row of screen and therefore needs more information-holding space than a low resolution screen.

Mode 4 has the same resolution as Mode 5 — 40 rows x 80 columns plus a text window. However because only two colours are available in Mode 4, it takes up less memory than Mode 5.

Similarly Mode 6 has the same resolution as Mode 7 — 80 rows x 160 columns plus text windows — but again with only two available colours.

We can do much the same as we did in Modes 3, 5 and 7. For example, type GR4 and the screen should clear to black with the blue text window at the bottom.

If you now enter:

COLOR 1: PLOT 5,5

you'll see our old friend the orange

squares. To give us a bit more to look at, enter:

DRAWTO 30,9.

The colour of the plotted point defaults to orange but we can alter it by setting register 0. If you enter:

SETCOLOR 0,7,4

you alter register 0 to colour 7, luminance 4 and the orange blocks change to a nice deep blue.

The colour information for the background is held in register 4, so if you type:

SETCOLOR 4,5,6

the black should change into a purple – colour 5 – with luminance 6.

The colours for the plotted points and the background are the two colours. We could also change the colour of the text window via register 3. Try:

SETCOLOR 2,12,4

for example. You should now have blue blocks, purple background and green text window – revolving, isn't it?

Blue, purple, green ... that's three colours. However, we haven't discovered an undocumented aspect of Mode 4. We've cheated by counting the colour of the text window which is really a bit of Mode 0. If we used a full-screen Mode 4, the text window would disappear and we'd be back to two colours.

If we specify **COLOR 2** for the plotted points, we plot them in the background colour. If there's nothing already on the screen we wouldn't see any effect of this. However, one

way to erase part of a display is to register it in the background colour.

For example, try entering:

**COLOR 2: PLOT 5,5:
DRAWTO 30,9**

and the line should disappear.

In addition to PLOTTing, we can still PRINTing as we did in Mode 5. For example, enter:

**POSITION 20,20: PRINT
#B;"111110000011111"**

and you should see lines appear where the 1s are printed and a space in between (then where the 0s are).

If you're looking for ways of saving memory, it's worth noting that using PRINT #B is generally more economical than PLOTTing pairs of data points. This means that a combination of Mode 4 and PRINT #B can be a very economical way of producing a display.

Although we can see the display simply by looking, there are times when your program needs to "see" the display. That is, it needs to know whether a particular screen location contains anything.

For example, you may be bouncing a ball around the screen and need to know if it has hit a wall.

Atari Basic provides a graphics command which will look at a screen location and say what is there. The command is LOCATE and the form it takes is:

LOCATE X,Y,Z

where X and Y are the coordinates of the screen location and the contents of the location are stored in Z.

If you press Reset and enter G&A

to get back to a clear Mode 4 screen, then enter:

COLOR 1: PLOT 40,20

you'll once again be confronted by an orange square. If you now type:

LOCATE 40,20,Z: PRINT Z

the number 1 should be printed in the text window.

If you now enter:

LOCATE 40,19,Z: PRINT Z

the number 0 should appear in the text window. In the first case, the 1 signified that location 40,20 contained a coloured pixel whereas the 0 in the second case signified an unlit pixel.

You can use the information gained from looking at the screen to determine what happens next in your program. For example, if your ball has hit a wall, you must change its direction to simulate a bounce.

For example, enter:

**LOCATE 40,20,Z: IF Z=1
THEN SETCOLOR 4,5,6**

and see the effect. Because we plotted a point at 40,20 the LOCATE command assigned a value of 1 to the variable Z. The IF Z=1 test returns a value of "true" so the THEN part of the command is carried out. In this case the colour in register 4 is altered and the background once again becomes purple.

The LOCATE command is very useful but behaves slightly differently depending on which mode you've selected. If you're in Modes 0,1 or 2 the LOCATE returns a value between 0 and 255.

If you've selected Modes 3, 5 or 7 then LOCATE will return a value of 0, 1, 2 or 3. As we've just seen, in Modes 4 and 6 the LOCATE command returns either 0 or 1.

If you recall the earlier articles in this series, you've probably worked out the correspondence between the characteristics of the mode and the values that LOCATE returns.

Even so, I suggest you try out the LOCATE command in all the graphics modes that we've covered so far and get familiar with its results.

■ That's your homework for this month – next month we'll look at Mode 8.



Guess the square the pawn is on – just one bit of information is a help ...

ROLAND WADDILOVE goes down the road that leads to artificial intelligence with this program that modifies itself

DATA MAKER

THE assembler published in the August issue of *Atari User* is a very useful tool for developing short machine code routines. If you've been using it, you might well be asking: How can these routines be incorporated in a Basic program?

The best way would be to store the machine code in data statements in the program. Then a simple routine could be used to read each item and store it in memory.

The problem with this method is how to get the code into the data statements. It would be very tedious to do it yourself... surely there must be an easier way?

Well, there is. Just ask your Atari to do it for you!

Data Maker was designed to take any section of memory and to convert it into data statements. All you have to do is tell it where to start and how many bytes to convert.

The program constructs all the data statements and types them in for you. It then deletes itself, leaving just the lines of data.

Quite a clever technique is used by the program and it's worth studying.

What the program does is to clear the screen and print a line number followed by "DATA". This is carried out in line 20.

It then Pokes the memory and gets 20 bytes of data. These are printed with commas between by lines 80 to

110. Finally, it prints:

NOTE 120

The next line, 120 is the most important line. It Pokes memory location 842 with 12 and ends the program.

What this does is to put the Atari editor into input mode when the program ends. It's as if you had just pressed Return when entering a line. Anything printed on that line is entered.

The clever part is positioning the cursor just before the program ends so that it lands on the line of data that it just printed. It then enters it as if you had typed it in. The cursor is then

moved on to the next line.

It's still in input mode remember, so it enters:

NOTE 120

which it does. This line sends it back to line 20 to print another data statement if it hasn't finished. When it's done this, it stops, enters it and goes round again.

When it's entered all the data, it goes on to line 140 which puts it back into normal keyboard mode. All the line numbers used by the data maker itself are printed on the screen followed by:

POKE 842,12

in line 150.

Again the cursor is positioned and the editor put into input mode.

The program ends, at which point the editor takes over and enters all the line numbers, deleting the program itself.

Finally it enters the poke which sets the editor back to normal keyboard mode. All that remains are the data statements.

As you can see, it's a powerful technique that's worth mastering.

I find programs that modify themselves quite interesting and there must be many other applications of this clever trick.

How about an artificial intelligence program? It could grow like a living creature, building up its data as it learned...

```

20 REM ***** Data Maker *****
30 REM *** GO starts here ***
40 GOSUB 115
50 IF ( "***** Data Maker*****" ) THEN GOTO 140
60 REM ***** POKE 842,12 *****
70 IF ( "***** POKE 842,12 *****" ) THEN GOTO 140
80 REM ***** POKE 842,12 *****
90 IF ( "***** POKE 842,12 *****" ) THEN GOTO 140
100 REM ***** POKE 842,12 *****
110 REM ***** POKE 842,12 *****
120 REM ***** POKE 842,12 *****
130 REM ***** POKE 842,12 *****
140 REM ***** POKE 842,12 *****
150 REM ***** POKE 842,12 *****
160 REM ***** POKE 842,12 *****
170 REM ***** POKE 842,12 *****
180 REM ***** POKE 842,12 *****
190 REM ***** POKE 842,12 *****
200 REM ***** POKE 842,12 *****
210 REM ***** POKE 842,12 *****
220 REM ***** POKE 842,12 *****
230 REM ***** POKE 842,12 *****
240 REM ***** POKE 842,12 *****
250 REM ***** POKE 842,12 *****
260 REM ***** POKE 842,12 *****
270 REM ***** POKE 842,12 *****
280 REM ***** POKE 842,12 *****
290 REM ***** POKE 842,12 *****
300 REM ***** POKE 842,12 *****
310 REM ***** POKE 842,12 *****
320 REM ***** POKE 842,12 *****
330 REM ***** POKE 842,12 *****
340 REM ***** POKE 842,12 *****
350 REM ***** POKE 842,12 *****
360 REM ***** POKE 842,12 *****
370 REM ***** POKE 842,12 *****
380 REM ***** POKE 842,12 *****
390 REM ***** POKE 842,12 *****
400 REM ***** POKE 842,12 *****
410 REM ***** POKE 842,12 *****
420 REM ***** POKE 842,12 *****
430 REM ***** POKE 842,12 *****
440 REM ***** POKE 842,12 *****
450 REM ***** POKE 842,12 *****
460 REM ***** POKE 842,12 *****
470 REM ***** POKE 842,12 *****
480 REM ***** POKE 842,12 *****
490 REM ***** POKE 842,12 *****
500 REM ***** POKE 842,12 *****
510 REM ***** POKE 842,12 *****
520 REM ***** POKE 842,12 *****
530 REM ***** POKE 842,12 *****
540 REM ***** POKE 842,12 *****
550 REM ***** POKE 842,12 *****
560 REM ***** POKE 842,12 *****
570 REM ***** POKE 842,12 *****
580 REM ***** POKE 842,12 *****
590 REM ***** POKE 842,12 *****
600 REM ***** POKE 842,12 *****
610 REM ***** POKE 842,12 *****
620 REM ***** POKE 842,12 *****
630 REM ***** POKE 842,12 *****
640 REM ***** POKE 842,12 *****
650 REM ***** POKE 842,12 *****
660 REM ***** POKE 842,12 *****
670 REM ***** POKE 842,12 *****
680 REM ***** POKE 842,12 *****
690 REM ***** POKE 842,12 *****
700 REM ***** POKE 842,12 *****
710 REM ***** POKE 842,12 *****
720 REM ***** POKE 842,12 *****
730 REM ***** POKE 842,12 *****
740 REM ***** POKE 842,12 *****
750 REM ***** POKE 842,12 *****
760 REM ***** POKE 842,12 *****
770 REM ***** POKE 842,12 *****
780 REM ***** POKE 842,12 *****
790 REM ***** POKE 842,12 *****
800 REM ***** POKE 842,12 *****
810 REM ***** POKE 842,12 *****
820 REM ***** POKE 842,12 *****
830 REM ***** POKE 842,12 *****
840 REM ***** POKE 842,12 *****
850 REM ***** POKE 842,12 *****
860 REM ***** POKE 842,12 *****
870 REM ***** POKE 842,12 *****
880 REM ***** POKE 842,12 *****
890 REM ***** POKE 842,12 *****
900 REM ***** POKE 842,12 *****
910 REM ***** POKE 842,12 *****
920 REM ***** POKE 842,12 *****
930 REM ***** POKE 842,12 *****
940 REM ***** POKE 842,12 *****
950 REM ***** POKE 842,12 *****
960 REM ***** POKE 842,12 *****
970 REM ***** POKE 842,12 *****
980 REM ***** POKE 842,12 *****
990 REM ***** POKE 842,12 *****
1000 REM ***** POKE 842,12 *****

```

Program 1

Silicon Chip

No. 1 FOR ATARI*

Atari 520 ST

GUARANTEE

Our **EXCLUSIVE** Direct Exchange Guarantee is available **FREE OF CHARGE** to all our customers. If a product purchased from **SILICON CHIP** becomes faulty due to a manufacturing or component defect, within **ONE YEAR** of purchase, we will, subject to availability, exchange for new.



SPEC

512K RAM
Expandable Rom
MIDI Interface, RS232
Serial/Communics Parallel
Interfaces, Floppy Disk and Hard
Disk Interfaces, RGB Video and TV
outputs, Sound Generator with 3 channels,
2 Joystick Ports, 3 Graphics and Text Modes -
320x200 - 512 colours, 640x200 - 4 colours, 640x400 B/W,
16 Bit Motorola 68000 Microprocessor running at 8 MHz.

PRICE

ST PACKAGE INCLUDES:

520 ST
1 Meg. Floppy Drive
Hi-Res B/W Monitor
Plus software listed below

CPM/MS

Basic, Logo, GEM WRITE,
GEM PAINT and GEM DOS
Operating Systems.

*Final prices and specs may be
subject to change.*

POWER WITHOUT THE PRICE

Chipsoft Integrated Accounts
Package -
Including Stock Control,
Nominal, Sales and Purchase
Ledgers **£250**

ST to Communications Printer Lead

£29.99

ST Modem Lead

£14.99

SILICON CHIP LTD, Showroom address:
302 High Street, Slough, Berkshire. Tel: 0753 70639

- * 1st Atari Business Centre.
- * 1st Dealer for 130 XE.
- * 1st Dealer for 1029 Printers.
- * 1st Dealer with our own Software House for Software Support.
- * 1st Dealer for 520 ST

Please phone or write for full details.

(Dealer Enquiries Welcome)



Part III of MIKE ROWE's series on how to give your program displays the professional touch

AI interrupt, in computer terms, is when the computer temporarily stops executing the main program — Basic, machine code or any other language — and associates another program in memory before returning to the original program.

There are several types of interrupt which are useful for different functions, and they can be divided into two types.

NMI — non-maskable interrupts — cannot be disabled by the 6502 processor and include vertical blank interrupts — **VBI** — display list interrupts — **DLI** — and **Reset**.

The **VBI** occurs during the screen blank after drawing one screen and before starting the next. These occur every 50th of a second.

A **DLI** can occur after each line is drawn on the screen and takes place in the small delay between drawing each line on the screen.

The other type of interrupts are called **IRQ** — interrupt request. These are maskable, which means they can be disabled by the 6502 processor.

These are several timer interrupts, peripheral and serial bus input/output interrupts, the **Break** key and 6502 **Break** instructions.

NMIs are handled by the Antic chip while **IRQs** are handled by the Poky and **PIA** chips.

But we are only interested in **DLIs** for now. A **DLI** can occur every time a line is drawn on the screen. Therefore, because it enables you to have a small program running each time a **DLI** occurs, it means you can change various parameters as the screen is drawn.

The result of this is that you can change, for example, the colour of any of the registers part way down the screen once or many times.

This allows many more colours to be displayed at once. Other possible uses are to change the character set in use part way down, change sound or music, move players or split players several times, fire scrolling in different directions — such as in *Progger* — and differing screen widths. Any of these without interfering with

It's not at all rude to interrupt...



your main program at all.

All this sounds too good to be true and there has to be a drawback. Well, if you are purely a Basic programmer there is. The interrupts must be in machine code.

However, don't panic. There is no reason why you cannot use **DLI** routines from other sources in your own program because using them is very easy.

Let's begin by looking at the routine itself, should you decide to try

writing your own. The first point is that timing is critical. Only a relatively short amount of time is available in a **DLI**, so the routine must be short.

It must start by storing any registers it uses — **A**, **X** and **Y** — on the stack, as the main program will require these back after the interrupt, and it must restore them at the end of the routine.

Also note that many locations for colour or other functions have two locations, the hardware register and the shadow register. In these cases you would normally **POKE** to the shadow register and the OS transfers the number to the hardware register during the vertical blank.

Any registers changed by the routine should be the hardware registers, not the shadow registers used from Basic.

For example, to change the background colour in Basic you would **POKE** 712 with a number. This is the shadow of the hardware colour register for the background — 53274.

However if you **POKE** directly to this the operating system would reset it to the value in 712 during the **VBI**.

This can be used to your advantage in that any colour change in a **DLI** will be reset to normal each time the screen is redrawn, thus keeping the change just below the **DLI**.

Any colour change on a line will not occur in a constant position on that line. This can be overcome by storing the value in **WYVNC** — 54282

Don't panic, but the interrupts must be in machine code

— before the colour register. This delays the interrupt until the end of the line making a neat boundary.

The best way to write your own DL is to examine the ones in the examples in this article first.

Having got your DL routine — written in Basicwell — it is used as follows. First modify the display list. This involves changing each display list line where the DL is required by setting bit 7. In other words add 128 — 580 — to the line. This can be a single line or several lines.

Next POKE 512 and 513 — \$200,\$201 — with the low and high byte values of the location of the DL machine code routine.

For example, Page 6 is 1536. Here machine code is safe from Basic and

most other operations. POKE in the code from 1536 and POKE 512 and 513 with 0 and 0 respectively — \$*255-0-1536. Finally POKE 54288 with 192 to enable the DL to occur.

Note there is only one address for DL routines and if more than one is to be used then the interrupts must

change the address as each is executed.

If this seems complicated, it isn't really, as the following examples show.

First you can change colours part way down the screen. Program 1 changes the background colour half

PROGRAM 1

10 REM BY MARK BOW

200 SCREENS: 0

300 POKE 512:POKE 513:POKE 54288:FOR

400 = 0 TO 100:POKE 512:1

500 POKE 512:POKE 513:POKE 54288:FOR

600 = 0 TO 100:POKE 513:1

700 POKE 512:POKE 513:POKE 54288:FOR

800 = 0 TO 100:POKE 513:1

900 POKE 512:POKE 513:POKE 54288:FOR

1000 = 0 TO 100:POKE 513:1

1100 POKE 512:POKE 513:POKE 54288:FOR

1200 = 0 TO 100:POKE 513:1

1300 POKE 512:POKE 513:POKE 54288:FOR

1400 = 0 TO 100:POKE 513:1

1500 POKE 512:POKE 513:POKE 54288:FOR

1600 = 0 TO 100:POKE 513:1

1700 POKE 512:POKE 513:POKE 54288:FOR

1800 = 0 TO 100:POKE 513:1

1900 POKE 512:POKE 513:POKE 54288:FOR

2000 = 0 TO 100:POKE 513:1

2100 POKE 512:POKE 513:POKE 54288:FOR

2200 = 0 TO 100:POKE 513:1

2300 POKE 512:POKE 513:POKE 54288:FOR

2400 = 0 TO 100:POKE 513:1

2500 POKE 512:POKE 513:POKE 54288:FOR

2600 = 0 TO 100:POKE 513:1

2700 POKE 512:POKE 513:POKE 54288:FOR

2800 = 0 TO 100:POKE 513:1

2900 POKE 512:POKE 513:POKE 54288:FOR

3000 = 0 TO 100:POKE 513:1

3100 POKE 512:POKE 513:POKE 54288:FOR

3200 = 0 TO 100:POKE 513:1

3300 POKE 512:POKE 513:POKE 54288:FOR

3400 = 0 TO 100:POKE 513:1

3500 POKE 512:POKE 513:POKE 54288:FOR

3600 = 0 TO 100:POKE 513:1

3700 POKE 512:POKE 513:POKE 54288:FOR

3800 = 0 TO 100:POKE 513:1

3900 POKE 512:POKE 513:POKE 54288:FOR

4000 = 0 TO 100:POKE 513:1

4100 POKE 512:POKE 513:POKE 54288:FOR

4200 = 0 TO 100:POKE 513:1

4300 POKE 512:POKE 513:POKE 54288:FOR

4400 = 0 TO 100:POKE 513:1

4500 POKE 512:POKE 513:POKE 54288:FOR

4600 = 0 TO 100:POKE 513:1

4700 POKE 512:POKE 513:POKE 54288:FOR

4800 = 0 TO 100:POKE 513:1

4900 POKE 512:POKE 513:POKE 54288:FOR

5000 = 0 TO 100:POKE 513:1

5100 POKE 512:POKE 513:POKE 54288:FOR

5200 = 0 TO 100:POKE 513:1

5300 POKE 512:POKE 513:POKE 54288:FOR

5400 = 0 TO 100:POKE 513:1

5500 POKE 512:POKE 513:POKE 54288:FOR

5600 = 0 TO 100:POKE 513:1

5700 POKE 512:POKE 513:POKE 54288:FOR

5800 = 0 TO 100:POKE 513:1

5900 POKE 512:POKE 513:POKE 54288:FOR

6000 = 0 TO 100:POKE 513:1

6100 POKE 512:POKE 513:POKE 54288:FOR

6200 = 0 TO 100:POKE 513:1

6300 POKE 512:POKE 513:POKE 54288:FOR

6400 = 0 TO 100:POKE 513:1

6500 POKE 512:POKE 513:POKE 54288:FOR

6600 = 0 TO 100:POKE 513:1

6700 POKE 512:POKE 513:POKE 54288:FOR

6800 = 0 TO 100:POKE 513:1

6900 POKE 512:POKE 513:POKE 54288:FOR

7000 = 0 TO 100:POKE 513:1

7100 POKE 512:POKE 513:POKE 54288:FOR

7200 = 0 TO 100:POKE 513:1

7300 POKE 512:POKE 513:POKE 54288:FOR

7400 = 0 TO 100:POKE 513:1

7500 POKE 512:POKE 513:POKE 54288:FOR

7600 = 0 TO 100:POKE 513:1

7700 POKE 512:POKE 513:POKE 54288:FOR

7800 = 0 TO 100:POKE 513:1

7900 POKE 512:POKE 513:POKE 54288:FOR

8000 = 0 TO 100:POKE 513:1

8100 POKE 512:POKE 513:POKE 54288:FOR

8200 = 0 TO 100:POKE 513:1

8300 POKE 512:POKE 513:POKE 54288:FOR

8400 = 0 TO 100:POKE 513:1

8500 POKE 512:POKE 513:POKE 54288:FOR

8600 = 0 TO 100:POKE 513:1

8700 POKE 512:POKE 513:POKE 54288:FOR

8800 = 0 TO 100:POKE 513:1

8900 POKE 512:POKE 513:POKE 54288:FOR

9000 = 0 TO 100:POKE 513:1

9100 POKE 512:POKE 513:POKE 54288:FOR

9200 = 0 TO 100:POKE 513:1

9300 POKE 512:POKE 513:POKE 54288:FOR

9400 = 0 TO 100:POKE 513:1

9500 POKE 512:POKE 513:POKE 54288:FOR

9600 = 0 TO 100:POKE 513:1

9700 POKE 512:POKE 513:POKE 54288:FOR

9800 = 0 TO 100:POKE 513:1

9900 POKE 512:POKE 513:POKE 54288:FOR

10000 = 0 TO 100:POKE 513:1

10100 POKE 512:POKE 513:POKE 54288:FOR

10200 = 0 TO 100:POKE 513:1

10300 POKE 512:POKE 513:POKE 54288:FOR

10400 = 0 TO 100:POKE 513:1

10500 POKE 512:POKE 513:POKE 54288:FOR

10600 = 0 TO 100:POKE 513:1

10700 POKE 512:POKE 513:POKE 54288:FOR

10800 = 0 TO 100:POKE 513:1

10900 POKE 512:POKE 513:POKE 54288:FOR

11000 = 0 TO 100:POKE 513:1

11100 POKE 512:POKE 513:POKE 54288:FOR

11200 = 0 TO 100:POKE 513:1

11300 POKE 512:POKE 513:POKE 54288:FOR

11400 = 0 TO 100:POKE 513:1

11500 POKE 512:POKE 513:POKE 54288:FOR

11600 = 0 TO 100:POKE 513:1

11700 POKE 512:POKE 513:POKE 54288:FOR

11800 = 0 TO 100:POKE 513:1

11900 POKE 512:POKE 513:POKE 54288:FOR

12000 = 0 TO 100:POKE 513:1

12100 POKE 512:POKE 513:POKE 54288:FOR

12200 = 0 TO 100:POKE 513:1

12300 POKE 512:POKE 513:POKE 54288:FOR

12400 = 0 TO 100:POKE 513:1

12500 POKE 512:POKE 513:POKE 54288:FOR

12600 = 0 TO 100:POKE 513:1

12700 POKE 512:POKE 513:POKE 54288:FOR

12800 = 0 TO 100:POKE 513:1

12900 POKE 512:POKE 513:POKE 54288:FOR

13000 = 0 TO 100:POKE 513:1

13100 POKE 512:POKE 513:POKE 54288:FOR

13200 = 0 TO 100:POKE 513:1

13300 POKE 512:POKE 513:POKE 54288:FOR

13400 = 0 TO 100:POKE 513:1

13500 POKE 512:POKE 513:POKE 54288:FOR

13600 = 0 TO 100:POKE 513:1

13700 POKE 512:POKE 513:POKE 54288:FOR

13800 = 0 TO 100:POKE 513:1

13900 POKE 512:POKE 513:POKE 54288:FOR

14000 = 0 TO 100:POKE 513:1

14100 POKE 512:POKE 513:POKE 54288:FOR

14200 = 0 TO 100:POKE 513:1

14300 POKE 512:POKE 513:POKE 54288:FOR

14400 = 0 TO 100:POKE 513:1

14500 POKE 512:POKE 513:POKE 54288:FOR

14600 = 0 TO 100:POKE 513:1

14700 POKE 512:POKE 513:POKE 54288:FOR

14800 = 0 TO 100:POKE 513:1

14900 POKE 512:POKE 513:POKE 54288:FOR

15000 = 0 TO 100:POKE 513:1

15100 POKE 512:POKE 513:POKE 54288:FOR

15200 = 0 TO 100:POKE 513:1

15300 POKE 512:POKE 513:POKE 54288:FOR

15400 = 0 TO 100:POKE 513:1

15500 POKE 512:POKE 513:POKE 54288:FOR

15600 = 0 TO 100:POKE 513:1

15700 POKE 512:POKE 513:POKE 54288:FOR

15800 = 0 TO 100:POKE 513:1

15900 POKE 512:POKE 513:POKE 54288:FOR

16000 = 0 TO 100:POKE 513:1

16100 POKE 512:POKE 513:POKE 54288:FOR

16200 = 0 TO 100:POKE 513:1

16300 POKE 512:POKE 513:POKE 54288:FOR

16400 = 0 TO 100:POKE 513:1

16500 POKE 512:POKE 513:POKE 54288:FOR

16600 = 0 TO 100:POKE 513:1

16700 POKE 512:POKE 513:POKE 54288:FOR

16800 = 0 TO 100:POKE 513:1

16900 POKE 512:POKE 513:POKE 54288:FOR

17000 = 0 TO 100:POKE 513:1

17100 POKE 512:POKE 513:POKE 54288:FOR

17200 = 0 TO 100:POKE 513:1

17300 POKE 512:POKE 513:POKE 54288:FOR

17400 = 0 TO 100:POKE 513:1

17500 POKE 512:POKE 513:POKE 54288:FOR

17600 = 0 TO 100:POKE 513:1

17700 POKE 512:POKE 513:POKE 54288:FOR

17800 = 0 TO 100:POKE 513:1

17900 POKE 512:POKE 513:POKE 54288:FOR

18000 = 0 TO 100:POKE 513:1

18100 POKE 512:POKE 513:POKE 54288:FOR

18200 = 0 TO 100:POKE 513:1

18300 POKE 512:POKE 513:POKE 54288:FOR

18400 = 0 TO 100:POKE 513:1

18500 POKE 512:POKE 513:POKE 54288:FOR

18600 = 0 TO 1

**8-PAGE
SPECIAL
FEATURE**



THE 520 ST HAS LANDED

THE 520ST is about to take its first public bow amid scenes never before witnessed in the micro industry anywhere in the world.

In the UK alone some 80 software houses have been working around the clock to launch programs on the ST hardware.

A similar number of com-

panies have already committed themselves to the new machine Stateside - making this the biggest pre-launch build up ever seen.

Billed as revolutionary both in power and price, the 520ST has already lived up to its name in the opinion of all leading British computer magazine reviewers. According to them

it is no longer just a new machine, but THE machine for 1985 and the foreseeable future.

The 520ST has caught the imagination of both the industry and the critics alike. And after its formal launch at this month's PCW Show it is expected to take the buying public by storm...

The race is on to provide a wide range of ST goodies

SOFTWARE publisher Telen is converting Lord Kingsley of Shill for the ST.

The test adventure is set in real time, has hundreds of locations and a large vocabulary, and many traps, tasks, puzzles and ruses.

The company also plans to bring out Planfile, a data management system with new techniques of user interfacing to offer a wide range of facilities without the need for programming.

It will run under the GEM operating system for single file applications - data, medical records, personnel histories, credit and stock records, on single card index.

Planfile is menu-driven, integrated with the GEM environment of icons, drop-down menus and mouse, and uses variable sized overlapping windows.

Data entry is at the keyboard, with most other operations with mouse-driven. Optional screens help windows prompt the user at every stage with no programming languages required.

The record card is user-defined, can be of any size up to the limit of a single screen, and can hold a number of fields such as numbers, dates, data values and strings.

Telen intends to demonstrate both programs at the PCW Show.

A MOSC version and a flight simulator for the ST have been promised by Island Logic, though no price or release dates have been set.

The music system will be similar to Island Logic's R&C and Commodore version, but by utilising the capabilities of GEM will be a lot more elegant.

The flight simulator will make users feel they are flying over real landscapes, thanks to the ST's graphics capabilities, says the company.

LANGUAGE are in the pipeline at Metacom, and should be ready for demonstration at the PCW Show.

The company will bring out a full C compiler, ISO standard Pascal, macro assembler and full Lisp compiler for the ST.

An Atari development kit, consisting of one language plus editor, manual and example programs, will retail for about £80, says Metacom's Peter Mackintosh.

EXPECTED to be available to the public in late October is Computer One's version of C with a source debugger, assembler and full screen user interface making full use of GEM.

The company is also considering porting its GL monitor screen to the ST. "It should be quite impressive with windowing facilities", says Computer One's Chris Bentley.

The C language package will be demonstrated at the PCW Show.

DASIS Software will almost certainly be bringing out a comprehensive assembler and a translator to operate with the assembler to simulate a logic analysis.

The company may also do Atari ST versions of its graphics utilities like shading, lightning, and will be aiming to get at least one ST product on the market for Christmas.

FINNIRD won't talk about a £6000 version of the best selling soft game title - *Accornia*'s hold over the name. The ST-oriented software house may have for an Atari version.

But Finnird has commissioned an independent author to write an ST game it hopes will be just as good.

This substantial project,

which has the working title *Star Glider*, should be released early next year, says Finnird's Mark Wright.

"It has a lot more to it than the usual arcade or adventure game, including some pretty flashy graphics".

Some of the work that has already been done on it will be demonstrated at the PCW Show.



THE race between UK software houses to announce the first program for the 520ST has been won by Microdeal of Cornwall. It has topped some 80 other companies to the post with the news that its arcade adventure game, *Lords of Havoc*, is to be released this September.

This game only a matter of weeks after Atari made development systems for the new machine available.

Atari User asked Micro-

deal's John Syme how his company was able to be so quick off the mark.

"*Lords of Havoc* was already available for the Commodore and the G1", he explained, "and although we took a year to develop the game the program was written on a Vix mini computer so we could easily adapt it for the Atari".

It was the success of the original version which resulted in it moving over to the

520ST. "Atari asked us to bring the game to them", revealed John Syme. "They must have been impressed because once they saw what it was like they agreed to provide us with a development system".

Lords of Havoc boasts 2,000 screens. The object is to bring about the downfall of the Dark Lords who have turned the once beautiful land into a place of desolation. The disc costs £19.95.

QUEST International is working on two major business software packages, both conversions of previous programs.

Cash Tracker, an accounting package designed for smaller businesses, should be ready for demonstration at the PCW show. The ST version is likely to cost less than the £185 price tag on previous versions.

The Padlock business control system, a fully integrated five module accounts package, is two thirds ready for the ST, says Quest's Daniel McMurtry.

It will cost less than the £1,240 charged for other versions.

McMurtry says Quest is committed to producing business software for smaller firms and has a vested interest in designing programs for the ST.

An ST version of its 8-bit Atari light synthesiser Colompace is being developed by Llamasoft.

The multi-coloured special-effects generator is operated by a combination of keyboard and joystick to produce the kind of light shows seen at rock concerts.

The planned synthesiser for the ST should provide even more spectacular displays, says Llamasoft.

SCHEDULED to be on sale early next year is an "extremely large and complex game" for the ST from Mammoth.

The program is "very heavily into graphics capabilities of the 520ST, and involves several simulations in a war type scenario", a spokesman said.

PROGRAM development aids for professionals and the serious hobbyists are on the way from GSF Computer Systems.

The company is porting its successful C compiler, macro assembler and linker from the G1.

The first ST product will encompass all three components and the company is also likely to issue the macro assembler and linker together at a later date, says GSF's Chris Shephard.

Prices should be announced at the PCW Show.

The firm is almost certainly going to produce a low cost GEM toolkit, which should be out before Christmas, and has plans for cross-compilation tools to help the smaller software houses.

A POWERFUL communications package available from late September is promised by Kuma Computers.

The "all encompassing" software will handle all types of electronic communications including MicroLink, Telecom Gold, Bulletin Boards, Postal and File Transfer.

Also available at the same time will be word processing, spreadsheet and database

software with some very nice features, says the company.

Kuma has been working in 68000 machine code for a couple of years and is really impressed with the 520ST.

Language and other tool box software is well along the pipeline too, the spokesman said.

The first Kuma products for the ST will be demonstrated at the PCW Show.

Watch Atari User every month for all the latest ST news



A FORMER mixer who first became interested in computers through playing arcade games in pubs is the author of Microdeal's *Lands of Havoc*.

Steve Bak, of Mansfield, graduated from copying letters to writing complex programs in six machine languages.

Now his former credits include the *Cartbeat* series – well known to Dragon and Commodore 64 users – and *Alexander* for the Tandy colour computer.

But how did he go about creating a program such as *Lands of Havoc*? Bak told *Atari User*:

"The first stage involves a lot of sitting down and thinking while an idea comes to you. Once the idea is there you have to think about structuring the game so it is both interesting and progressive to play.

"Presentation is the next thing to worry about, how the game should appear on screen. The story line also needs filling in".

This stage took Bak four months, working 80 hours a week, "plus stealing a few hours of other people's time". It was at this point he realised the game would not be able to compete with many other bigger games on the market for it then only had 80 screens.

He enlarged it by developing the storyline further and eventually added another 1,600 screens. This part was not a solo effort, however.

"I try to involve people who are not

How an ST game is born

programmers as a scientific mind usually sees things in black and white, whereas non-programmers seem more creative and are able to add a story", he said.

Only then did Bak start the actual programming. The original game for the Commodore took three months, the Spectrum version two, and the latest, for the ST, another two.

Bak had to write routines for every step of the game.

"I do not write more than 100 lines a night so I am fresh enough to go through it all at the end to ensure there are no bugs", he says.

The last stage is fitting each small routine into a whole, fully integrated program, then passing it on for others to pick to pieces.

"If they believe there are any problems I sort them out and, when everyone is satisfied, turn out the final program and put it in Microdeal's hands while I sit back.

"And that's how the 520ST version of *Lands of Havoc* was born...."



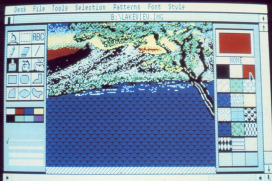
IT'S A REAL GEM OF AN IDEA

THOSE who have followed Digital Research's fortunes from the launch of CP/M in 1975 through to Concurrent PC-DOS in 1984 will appreciate that as a systems house, we have so far specialised in languages and operating-system products for the industry.

However, we are taking a different approach with GEM because it is a user interface which is compatible with a wide range of applications, operating systems, languages and hardware.

GEM will have more impact on the end-user market than any other product which we, or any other

"Frank Iveson is Director, Northern European Operations, Digital Research (UK)."



By FRANK IVESON

Articles were made easy with GEM application packages

software houses, have so far produced.

A working definition of the term "user interface" is "the repository of commands a user needs to know to make his or her machine work to satisfaction".

Command repositories which require the memorisation of obscure sequences of keystrokes are difficult to retain and the full power of the system may never be fully appreciated by the non-technical user.

This is true of the command structures of CP/M, MS-DOS, PC-DOS and especially of some variants of Unix, which contain certain innocent-looking commands which can destroy the integrity of the system if used at the wrong time.

There is also confusion among users who regularly work at different machines. Often a user has to

interrupt work to decide if the command he or she is about to enter does in fact belong to the system in use.

More resistance to personal computer use stems from the obscurity factor than any other non-cost consideration - especially among women.

Menu-driven applications are also affected by obscurity. Menus provide more clues than commands, but a major difficulty for the novice is the disappearance of the subject matter from the screen while choosing a menu option. Even for experienced users, this causes continuing frustration with the software. Users are ready for something better.

The GEM user interface remedies these frustrations and eliminates obscurity. More than 50 software

houses have stated their intention to publish GEM-based packages by the end of the current year.

Among these are Cheng Labs, Compuart, Pageman, Thomson Computer Software, Litetree, Itebeam and ABC Software.

The available GEM applications include GEM Desktop, which replaces operating system commands, an enhanced word processor, GEM Write, graphics programs such as GEM Graph and GEM Draw and several business packages including SP's well-known Open Access suite.

The \$200T is now shipping with Desktop, GEM Paint and OR Logo under GEM. GEM Paint is a drawing and design package and OR Logo is the Digital Research version of Logo

which won a European computer prize award presented last year by West Germany's *Chip* magazine.

The fundamental research behind the GEM concept was done in the early '70s by Xerox PARC in the US and was first implemented on Xerox's Star network, and later by Apple on Lisa and Macintosh. GEM is therefore based on a long history of user experience.

Xerox's recent commitment to GEM is a further indication of the maturity of the product, and reinforces the approach of this special interface as an industry standard.

GEM Desktop, the operating system metaphor, is the first GEM application that most users will come across. Visually, its screen resembles a bird's-eye view of a desk, with documents, folders, disc drives and a rubbish bin. These objects are called icons.

Analogues of real world accessories such as calculators and clocks are also available. At the top of the screen is a menu bar.

In GEM Desktop and all other GEM applications the user selects a resource by using a mouse or the cursor keys to move a pointer on the screen over an icon or desk accessory.

Clicking the mouse – or keypadd equivalent – selects the resource represented. Moving the pointer to a command on the menu bar causes a sub-menu to drop down into the top quarter of the screen.

Thus, in GEM Desktop, selecting a disc drive icon and moving the pointer to the File command on the menu bar reveals the File dropdown menu. Clicking on the command Open in this dropdown menu displays the contents of the drive in a directory window, and the dropdown menu disappears.

The directory window contains more icons – named folders and documents, representing files and applications.

By moving the pointer over a folder and clicking, the folder is selected. Repeating the menu bar procedure as above, or double clicking, opens up the folder into a second icon-filled window which overlaps the first and contains a catalogue of the folder contents.

Pointer movements can delete or save files and groups of files in the window by dragging them to the rubbish bin or to a disc drive, can change the sizes of the desktop area and the windows and can scroll their contents.

They select the whole range of commands available in Desktop via

ASANTE's decision to bundle the \$20ST with GEM has been described as a brilliant marketing ploy for UK computer market advertisers.

This is due to the fact that GEM allows the ST to offer similar working environments to machines like the Macintosh which are more than double the price.

Given the market leading IBM is getting in on the act, GEM is currently available in 70 retail applications for the IBM PC.

Meanwhile the number of major manufacturers who have become licensed to distribute GEM and GEM applications with their machines has risen to more than 20.

the menu bar and dropdown menus.

No command has to be typed in, or memorised. Errors are explained in full in dialogue boxes which contain options for recovery.

For drawing and painting applications, use of a bitpad or tablet and pen are even more intuitive to users.

Having mastered the simple skills of hand and eye co-ordination in moving the pointer with the mouse or other pointer device, the user has only to become familiar with the simple logic of GEM's visual command structure in Desktop to know how to get started with all other applications, because GEM is a highly consistent user interface.

Non-GEM applications coexist with GEM applications written to the same operating system. Running a non-GEM application is simply a matter of opening the appropriate application folder icon, when control

is handed back to DOS and the application runs normally.

Coexistence is possible because the functionality of GEM software is based on a system extension which does not interfere with the workings of the underlying operating system.

The GEM system extension and GEM software can be implemented on any 16 and 32 bit CPU configuration, for CPM, MS-DOS, PC-DOS and Concurrent DOS operating systems.

GEM's applicability to a wide range of hardware configurations and operating systems will help good GEM applications to spread fast from one machine to another and/or between operating systems.

Moving GEM itself to another machine only requires minor modifications to peripheral parts of the GEM software.

For example, a software developer wishing to move an application written for the Macintosh's 68000 environment to a more popular computer, need only implement minor modifications of subroutine calls to convert it to GEM, followed by recompilation for another operating system.

Because IBM dominates in the personal computer market, other manufacturers, software houses, dealers and users all need a standard IBM compatible user interface. GEM is such a standard and it will migrate to all conceivable 16 and 32 bit configurations of the future.

In the US, amid claims made for Microsoft's Windows and IBM's Topview, GEM Desktop is the only machine-independent icon-based user interface on the market and selling in volume.

Speeding applications

To speed the development of versions of GEM applications by manufacturers and software developers, Digital Research has introduced the GEM Programmers Toolkit.

The Toolkit itself uses a GEM interface, and programmers are pleased with it. They expect the graphics to be slow, but in fact GEM's fast code doesn't sacrifice performance.

The Toolkit allows programmers to interactively design GEM icons and other objects without resorting to back-of-envelope calculations or special coding. With Toolkit's icon editor, for example, the programmer paint and edit an object at the pixel level until satisfied, and the Toolkit

generates the code automatically.

Similarly, text for custom dialogue boxes is installed simply by typing it in, using any of the major West European languages whose character set is supported by the operating system in question.

GEM applications are also possible in a number of high-level languages for which the Toolkit can be equipped.

Demonstration programs may be produced in a matter of days, and full-scale implementations within a few months.

The Toolkit also comes with good licensing agreements allowing software houses and manufacturers to bundle GEM Desktop with their own applications or machines.

THE ST has many remarkable features, not least of all its operating system. To most users, the ST is controlled by the GEM - Graphics Environment Manager - and that is the means by which users will communicate with the machine.

However, buried away from sight is the TOS - Transient Operating System - or what most people understand to be a DOS - disc operating system. When the ST is booted up, which at the moment is done from the TOS system disc, the machine not only loads the TOS into RAM but also loads the GEM Desktop, which is the screen that appears when loading is complete.

The name "TOS system disc" is slightly misleading, as you can see, because it contains far more than merely the TOS.

Despite the name TOS and the state of the art hardware, the DOS is in fact a virtual clone of CP/M 80k. I say virtual as there are differences which are not strictly part of CP/M and it would appear to mix in some of the better features of MS-DOS. But more of that later.

Designed by Digital Research, CP/M 80k, as its name suggests, is a version of CP/M which runs on a 68000 processor, the chip at the heart of the ST.

Now all this may seem to be confusing. Which is the operating system - GEM or TOS?

To understand the function of these systems it's important to realise the purpose of a DOS. Stated simply, it is a program, or more accurately a number of programs, that process commands inside the micro.

As these operations are related to accessing the disc drive, though not exclusively, the term is DOS rather than OS - operating system.

The function of the TOS is to see that commands and files of data are processed and in general take away from the user the headache of what's happening inside the machine.

From the user's point of view, the DOS is a convenient method of helping him to manage his files on disc.

The means of control are by typing a command line, say, DIR, for a directory of files. But as useful as that is, systems like CP/M have not been renowned for their friendliness. Command lines like

RIP Baa?*

are not quick to type, nor are they immediately obvious. The above command line merely tells the system to copy all files from disc drive A to drive B. And this is what selection have called user-friendly systems. ...

To make life easier, these functions of a DOS - copying, formatting, and so on - are presented by a GEM

One OS - or two?

system in pictures, or to be more accurate, icon graphics.

Just point the mouse, drag the icons, click and the files are copied. OK, so far, but if the GEM system does all this why bother with the TOS? Well it's not quite as simple as I've made out so far.

The TOS is far more complicated, and those developing professional software will need the command facilities of TOS to probe the inner depths of the machine.

Unfortunately for the enthusiastic user, Atari has not made this easy and there is no straightforward method of entering TOS.

But more importantly, the TOS is THE operating system of the ST. GEM is merely a second level operating system which is under the control of TOS and the ST.

GEM DOS, also developed by Digital Research, needs certain requirements in order to work.

At least 128k of RAM is needed and of course the 520ST meets this more than adequately. This requirement explains why the 130ST - 128k RAM - has not and might not be released.

Atari has the intention of placing the TOS and GEM system in ROM,

JEREMY VINE
digs deep into
the inner
workings of the
Atari 520ST to
explain the
interaction of
TOS and GEM

within the machine. This would of course release valuable space within the memory and increase speed.

Although the requirement is for a minimum 128k, the TOS and GEM Desktop together on the system disc account for around 200k of code. This also explains why the machine takes about 30 seconds to boot.

The TOS is an interesting beast as it is not quite one thing or the other.

A first glance at it suggests that it is merely a copy of CP/M 80k and considering DR's involvement in the entire package - GEM and LOGO - this would hardly be surprising.

But unlike CP/M 80k, the filing system can be hierarchical, which is a definite improvement. This feature is reminiscent of MS-DOS and is more than just a nice touch.

The GEM Desktop allows the user to open different folders for storage of files. These folders are in effect sub-directories under the main directory.

This can be seen if opening a folder from within a present directory. The window display shows the contents within that folder - sub-directory - and closing the window returns the

* Jeremy Vine is a freelance writer and author of several books including one on the Atari ST. The ST Companion.

user to the directory above. In this way a hierarchical directory structure can be created.

As GEM has this structure the parent DOS – as I will refer to TOS – also has a hierarchical nature. So it is more than just cosmetic. Creating directories within directories is a convenient method of splitting up and finding files.

But what else happens when you boot up the machine with the system disc?

The purpose of booting the ST is not only to load TOS and GEM but to initialise the entire system and carry out certain status checks.

These determine what kind of monitor is being used – mono, colour and so on – whether there are applications in cartridge memory that can be run, that is, a cartridge is inserted, setting various registers to default values, and a host of other vital functions.

Of course this is transparent to the user and all you will see is the pretty desktop display once booted or the particular application if using a cartridge.

The status of the desktop can be saved at any point and this is stored in a file called DESKTOP.INF. This contains all the startup conditions of the desktop, these being the number of windows open – if any – their positions on the screen, which directory to access and the labels assigned to the disc identifiers.

It also provides information to the system about the way in which an application should be run. This



information is set up by the user with the INSTALL APPLICATION option on the desktop screen.

And that just about concludes this brief look at the TOS and GEM.

Fortunately for the user, these two systems work in unison and together provide a powerful and easy means of control over the main operations of the micro.

The central manager is the TOS,

with the GEM system as a second level operating system.

GEM is the friendly face of the ST and the one part of the ST all users will come to know and understand well, but behind the icons and windows is another system which maintains order within the machine.

A case of two systems in perfect harmony – well, that's the theory anyway...

American software on the move

NEWS of exciting software being developed for the Atari ST is beginning to filter through from the United States.

Noted producer of the best-selling DB Master database, Stoneworks, has reached an agreement with Atari Corp to develop a new filing program for the ST. The company promises it will be "extremely easy for the entire level home or business user".

Users will be able to select colours and change fonts, as well as lay out files to suit individual needs.

Microsoft is developing the Omega telecommunication package for the ST and installing 8-bit Atari computers. It will have icons, windows and pull-down menus and will use either a mouse or joystick.

The 16-bit program is expected

to cost about \$50. Microsoft is also developing a 3D battleships game for the ST.

Spinaker Software expects to have eight products for the ST shortly. These are believed to be adventure games. Infocom is planning to convert its entire line of text adventures.

And Sierra On-Line intends to bring out top-selling favourites King's Quest and Ultima II for the new machine.

Getting in first

AIN unreprising UK distributor went Transatlantic to ensure it would be the first company to be able to deliver software for the 520ST. Faced with the

prospect of shortages here for some time to come, Software Express arranged to import programs from Haba Systems of Van Nuys, California, itself breaking new ground as the initial company to produce software for the new machine State-side.

The distributors' first assignment, which was due to arrive in August, included Haba Check Minder, HabaCom and Haba Higgs "C".

Check Minder is a money manager program which enables the user to monitor income and expenses and prepare tax returns.

The second, HabaCom, is a telecommunication program which supports terminal emulation, direct link to the computer, and VT100, TTY/CRT and full/half duplex baud rates.

Haba Higgs "C", the third program, is a complete language system consisting of compiler, assembler and linker. It supports GEM DOS calls and functions.

Depending on the rate of exchange between the two countries, prices for Check Minder and HabaCom are expected to be around £50, while Higgs "C" will cost in the region of £80.

This month Software Express is expediting delivery of two more programs – HabaWord, a word processor with large document capabilities, and HabaCalc, a versatile spreadsheet. Prices have yet to be fixed.

The company is currently negotiating for more American software for the ST but the deals have yet to be finalised.



ATARI ST 520ST

POWER WITHOUT THE PRICE
THE NEW ATARI 520ST

ATARI 520ST SPECIFICATION

PROCESSOR
The Atari 520ST features a 68000 processor running at 10MHz, providing the power to handle complex tasks and graphics.

MEMORY
The Atari 520ST has 1MB of RAM, expandable to 2MB using optional memory modules.

GRAPHICS
The Atari 520ST features a custom graphics chip (GEM) that allows for high-resolution, multi-colored graphics.

USER FRIENDLY GEM OPERATING SYSTEM
The Atari 520ST comes with the GEM (Graphics Environment Manager) operating system, which is easy to learn and use.

SOFTWARE
The Atari 520ST is compatible with a wide range of software, including games, productivity tools, and educational programs.

PRICE
The Atari 520ST is priced at £2,899 (incl. VAT), £2,899 (incl. VAT), £2,899 (incl. VAT).

MACINTOSH v File v 520ST

	APPLE II/520	APPLE II/520	APPLE II/520
Processor	68000	68000	68000
Memory	1MB	1MB	1MB
Graphics	640x480	640x480	640x480
Sound	8-bit	8-bit	8-bit
Keyboard	Yes	Yes	Yes
Mouse	Yes	Yes	Yes
Price	£2,899	£2,899	£2,899

PRESS COMMENT

The Atari 520ST is a powerful and affordable computer that offers a wide range of features and capabilities. It is a great choice for anyone looking for a reliable and easy-to-use computer.

The Atari 520ST is a powerful and affordable computer that offers a wide range of features and capabilities. It is a great choice for anyone looking for a reliable and easy-to-use computer.

The Atari 520ST is a powerful and affordable computer that offers a wide range of features and capabilities. It is a great choice for anyone looking for a reliable and easy-to-use computer.

USER FRIENDLY GEM OPERATING SYSTEM

The Atari 520ST comes with the GEM (Graphics Environment Manager) operating system, which is easy to learn and use. It provides a user-friendly interface for managing files and running applications.

FREE SOFTWARE AND FUTURE EXPANSION

The Atari 520ST is compatible with a wide range of software, including games, productivity tools, and educational programs. It also offers the potential for future expansion through optional memory modules and other accessories.

- 512K RAM
- 5.25" DISK DRIVE
- KEYBOARD (85 KEYS)
- MOUSE
- GEM

£749



SILICA SHOP
WE ARE THE UK'S HOT ATARI SPECIALISTS



The Atari 520ST is a powerful and affordable computer that offers a wide range of features and capabilities. It is a great choice for anyone looking for a reliable and easy-to-use computer.

SILICA HOTLINE 01-309 1111

SILICA SHOP LTD, 1-4 The Mews, Mathew Road, Solihull, West, B37 4YU
SEND FOR FREE ATARI ST LITERATURE

PLEASE SEND ME FREE LITERATURE
ON THE NEW ATARI 520ST COMPUTER

Name: _____
Address: _____
Postcode: _____



FEELING a bit peckish one afternoon, Horace, a friendly Blob creature, wanders off in search of food. There's not a bite to eat to be found anywhere, so after a short while he decides to risk entering the maze monsters' den.

He's in luck, the ground is covered with crumbs left over after one of their great feasts. The sight of all those tasty morsels makes Horace completely forget about the monsters until they start to chase him.

Can you help Horace collect the crumbs and avoid the monsters? Be careful, though - the monsters are out to make a meal of Horace if they can catch him....

Maze March is a fast arcade game to sharpen up your reflexes and get the adrenalin flowing. You start with three lives on screen and the difficulty increases with each screen cleared. Your best score is recorded in a high-score table.

If you find it too easy or too



hard, the difficulty can be changed by altering L in line 4210. The higher the number the harder it is.

There are several features to interest programmers, so it's not just for games players. A short machine code routine is used for all printing. This prints the multicoloured characters used by directly writing to screen RAM.

If you want to see how it works you can use Kevin Edwards' disassembler which was in the July issue of *Atari User*. The code is stored in page 6 in the memory starting at 1036.

A fast tune accompanies the high score table, instructions and title page.

The high score routine shows how to sort numbers and strings in Atari Basic.

The program has been broken down into short subroutines as usual and is as structured as possible. A title at the start of each subroutine describes its function so it should be fairly easy to follow.

Maze Munch

If you've got an appetite for a fast moving maze game then help Horace munch the morsels in this action-packed game by ROLAND WADDILOVE

VARIABLES

C-H	The monsters' coordinates.
L	Level of difficulty.
X,Y	Your coordinates.
SCREEN	Screen number.
DOTS	Number of dots left.
OK	A flag to show whether you're OK.
NAME\$100	Names in the high score table.
H\$50	High scores.
A\$10,541	A copy of what's on the screen.

EOR—A way to find out who's telling the Exclusive truth



MIKE BIBBY continues his series on binary numbers

In the last article we looked at the AND and OR operations on binary numbers — logical operations, as they are known. These were simply rules for combining numbers bit by bit. We shall continue our exploration this month with a look at the EOR operation.

EOR stands for Exclusive OR — sometimes people call it XOR. Either way it's the same thing. EOR is a variant on the way we normally use the term OR.

For example, if I say:

Mike OR Pete wears glasses

this is true if Mike wears glasses, OR Pete wears glasses, OR both Mike and Pete wear glasses.

Now it's this last case of OR we're interested in, where they both wear glasses. EOR works just like OR up to this point. However, EOR does not

"allow" both of them to wear glasses. Either one does, or the other, but not both.

To put it another way, the one who wears the glasses does so exclusively.

If both are wearing glasses then while:

Mike OR Pete wears glasses
would be true.

Mike EOR Pete wears glasses
would be a downright lie!

We could signify that a statement is true with the letter T, and use F for false. At school our teachers used ticks for truth and crosses for false. Since we're using computers, though, we'll use numbers: 1 will denote true and 0 will denote false. We've chosen 1 and 0 because they fit in so well with the binary system.

So, in the above example, if Mike has glasses we can give Mike the value 1. If Pete hasn't glasses we can

give Pete the value 0. Table 1 shows the idea, applied to each combination of spectacle user. The ones and zeros are known as truth values, states or conditions.

As you can see, there are four possible cases as far as Mike and Pete wearing glasses are concerned: neither can wear them as in case 1, where both Mike and Pete has 0 value.

Then again, Pete may wear them (1) whereas Mike does not (0), case 2, and so on.

If you look carefully at the numbers involved in all four cases, you see that we've got four pairs of bits we can combine. Each pair of bits is made up of the "truth bit" for Mike and the "truth bit" for Pete.

What I've done in Table 2 is to combine these pairs for all four cases in accordance with our OR rules. We've stored the result in a third

	Wears glasses		
	Mike	Pete	
Case 1	0	0	neither wears glasses
Case 2	0	1	Pete wears glasses
Case 3	1	0	Mike wears glasses
Case 4	1	1	both wear glasses

Table 1

Mike wears glasses	Pete wears glasses	Mike OR Pete wears glasses
0	0	0
0	1	1
1	0	1
1	1	1

Table 2

Mike wears glasses	Pete wears glasses	Mike OR Pete wears glasses
0	0	0
0	1	1
1	0	1
1	1	1

Table 09

column.

We call such a table a Truth Table. In this case, it's the truth table for OR. We can use it to work out the result for any OR combination of two bits. All we have to do is to find the row that starts with the two bit values we're combining and then look in the third column for the result.

Table 11 shows a similar table for Mike AND Pete wear glasses.

Again the first two columns are identical, covering all four possible cases. The third column combines them according to the AND rules.

Look again at Table 11. This corresponds in a sense to our binary rule for OR: you get a 1 if either or both bits you combine contain a 1.

However if when talking about Mike and Pete you mean OR in the exclusive sense, EOR, then the combination of Mike wearing glasses and Pete also wearing glasses would have to be false. This is because EOR means either one or the other wears glasses, but not both – it's exclusively one or the other.

If we do mean EOR in this exclusive sense we'd write our statement about them as:

Mike EOR Pete wears glasses

Its Truth table is given in Table IV:

Mike wears glasses	Pete wears glasses	Mike EOR Pete wears glasses
0	0	0
0	1	1
1	0	1
1	1	0

Table IV

If you look at each case, you'll see that the only time Mike EOR Pete is true is when either one or the other wears glasses, but not both (or neither).

More formally, if both bits are 0, or both bits are 1 the result is 0. If either is 1 and the other is 0 the result is 1.

To put it another way, if the bits are identical the result is 0, otherwise the result is 1.

Let's have a look at how we EOR binary pairs of numbers. It's the same as for OR and AND – just apply the rules for EORing to each pair of bits in succession. For example:

01000110
 EOR 01100101
 gives 00100011

Take a look at what happens when you EOR a number with zero:

01000110
 EOR 00000000
 gives 01000110

that is, when you EOR a number with zero it leaves that number unchanged. Also something interesting happens when you EOR a number with itself:

01000110
 EOR 01000110
 gives 00000000

Whenever you EOR a number with itself, the result is zero. This is as it should be: remember, when you EOR two identical bits the result is zero.

Now EOR has a property which makes it quite useful – let's look what happens when we take a number, EOR it with a second number and then go on to EOR the result once more with that second number.

First number 01000110
 Second number EOR 01100101
 Result 00100011
 Second number EOR 01100101
 Final result 01000110

As you can see, the first number has magically re-appeared! This always happens when you EOR twice with the same number as, in a sense, the two EORings cancel each other out.

Table V summarises the process

First bit	Second bit	Result 1st EOR	Second bit again	Result 2nd EOR
0	0	0	0	0
0	1	1	1	0
1	0	1	0	0
1	1	0	1	0

Table V

for all four possible pairs of one-bit numbers. As you can see, for all the cases the final resulting bit (when the first bit has been EORed twice with the second) is identical to the first bit.

Another way to think of it is that we are doing:

Our number EOR second number
 EOR second number

Taking the underlined part first, we've already seen that any number EORed with itself gives a zero result. So what we're really doing is:

first number EOR 0

which, as we've also seen, must leave just the first number, since EORing with zero leaves a number unchanged.

All this may seem rather abstract, but actually it's quite useful. In fact we tend to use AND, OR and EOR quite often in graphics, particularly in animation.

To simulate movement we frequently print something on the screen, then after leaving it there for a while to register on the eye, we blank it out and print it in a new position and so on.

Sometimes we blank the character out by printing it again in the same place but in the background colour.

We can, however, use EOR. If we use EOR to place our character on the screen – never mind exactly how for the moment – when it comes to wanting rid of it, we can just repeat ourselves.

That is, we just EOR the character on again. As we've seen, the effect of two EORs is to cancel each other out. In this case, they cancel out to the original background – and the character disappears.

The point is, logical operators, as AND, OR and EOR are known, can be invaluable to both the Basic and machine code programmer.

■ Next month we'll take a brief look at the idea of masks.

A money-saving special offer from

**ATARI
USER**

THIS

**is your
passport
into the**

exciting world of telecomputing!



Price includes VAT, post & packing

ITS by far the fastest growing field in micro-computing. All over the world micros are talking to each other over the telephone line. As well as to the ever-increasing number of public and private databases, bulletin boards – and even giant mainframe computers.

We want all Atari User readers to share in the new technology that makes all this possible. So we're offering a unique starter pack at an unbeatable price. It gives you everything you need to get in touch with the big wide world outside:

- **Modem**
- **Software**
- **Serial Interface**

The modem is the amazing Miracle Technology WS2000. One of the most powerful on the market, it provides all the facilities you require. Yet it's simplicity itself to use. Just plug it into a standard British Telecom jack and you're away!

The package also features the superb Datar serial interface, which links the modem directly to the Atari's peripheral port without the need for the 850 serial interface.

The best hardware deserves the best

software to drive it, and with the specially written Multi-Vistatext program the package is complete. It supports all the standard baud rates – 1200/75, 75/1200, 1200/1200 and 300/300 full duplex.

Your Atari User package will allow you to talk directly to other computers, to send your own telex messages, to go tele-shopping – even to download free software programs directly into your Atari.

You will be able to join Miconet/Prestel, which will immediately open up to you a vast menu of 750,000 pages of information – instant world news, sports, holidays, hotels, train and airline timetables, all regularly updated.

And you can become one of a growing number of enthusiasts who are joining MicroLink, the giant database set up in conjunction with Telecom Gold, which is described more fully in this issue.

But first, send for the Miracle package – and enter the fascinating, limitless world of communications!

Use the order form on Page 61

MicroLink

Your personal passport to the world of communications with

TELECOM GOLD

Telecom Gold's trademark of British Telecom.

What it offers the Atari user...

Give your micro mainframe power

With MicroLink you receive a terminal linked directly to the Telecom Gold mainframe computer and able to tap its tremendous power and versatility. Right away, you'll be able to use giant number-crunching programs that can only run on a mainframe. You can set up your own computerised filing system, store and update statistics and other information, cross-reference material between files, selectively extract the information you want, perform massive calculations and design reports to display information from any of the files and in any format you choose.

The biggest bulletin board of them all

The number of bulletin boards is growing rapidly. New ones are springing up in all parts of Britain and all over the world, with people of like minds chatting to each other on all manner of subjects. The only snag is that the vast majority are single user boards - which means lots of other people are also trying to make contact and all too often all you get is the engaged tone. But with the MicroLink bulletin board there is no limit to the number of people using it at the same time. And no limit to the number of categories that can be displayed on the board.

We're only a local phone call away

More than 96 per cent of MicroLink subscribers can connect to our mainframe computer in London by making a local phone call. This is possible because they use British Telecom's PMS system, which has access points all over Britain. A local phone call is all you need, too, for access to the international Dialcom system through MicroLink.

Telemessages - at a third of the cost

The modern equivalent of the telegram is the telemessage. Sent at between 10pm and delivery is guaranteed by first post the following day (except Sundays). The service was intended for people phoning their message to the operator, and it costs £1.50 for 50 words. But you can now use it via MicroLink for only £1.25 for up to 700 words!

Send and receive telex messages

With MicroLink you can turn your micro into a telex machine, and can send and receive telex messages of any length. You will be able to

communicate directly to 95,000 telex subscribers in the UK, 11 million worldwide - and even with ships at sea via the telex satellite system. Business people can now send and receive telexes after office hours, from home or when travelling. You can key in a telex during the day and instruct MicroLink not to transmit it until after 4pm - and save 10 per cent off the cost!

The mailbox that is always open

MicroLink is in operation 24 hours a day, every day. That means you can access your mailbox whenever you want, and from wherever you are - home, office, airport - even a hotel bed-room or golf club! No-one needs to know where you are when you send your message.

What does it all cost?

Considering all the services you have coming, MicroLink is remarkably inexpensive. You pay a once-only registration fee of £5, and then a standing charge of just £3 a month. On-line costs are 30p a minute (between 4pm and 10pm) or 10p a minute during office hours. There is an additional 2p a minute PMS charge if you are calling from outside the G5 London call area. Charges for telex, telex messages and storage of files are given on the next page.

How much it costs to use MicroLink

Initial registration fee: £5.

Standing charges: £3 per calendar month or part.

Connect charges: 3.5p per minute or part - (week-ends, 10.5p per minute or part - standard rate).

Applicable for duration of connection to the Service Information Charge 1 minute.

Charges are given from 10.00am to 10.00pm, 7 days a week, Saturday and Sunday, and public holidays. Standard rate is from 10.00am to 10.00pm, Monday to Friday, excluding public holidays.

Filing charges: 25p per unit of 2,048 characters per month.

Applicable for storage of information, sent a time slot code and mailbox. The number of units sent is on average calculated by reference to a daily sample.

Information Databases: Various charges. Any charges that may be applicable are shown on your before you obtain access to the database.

MicroLink, PMS services: 2p per minute or part (300 baud), 2.5p per minute or part (1200/75 baud).

Only applies to users outside the UK, London call area.

Telex registration: £10.

Outgoing telex: 5.5p per 180 characters (UK), 11p per 180 (Europe), 16.5p per 1000 ft. America) £1.35 per 400 (Rest of world), £2.75 per 800 (ships at sea).

Delivered messages sent on the night service are subject to a 75 p per word discount.

Incoming telex: 50p for each correctly addressed telex delivered to your mailbox. Obtaining a mailbox reference from the sender incurs a further charge of 50p.

If it is not possible to deliver a telex without a mailbox reference, if a telex is received without a mailbox reference the sender will be advised of non-delivery and asked to provide a mailbox address. Each new mailbox for telex and computer facility will incur a charge of 8 storage units a month. Further storage charges could be incurred depending on the amount of telex storage and the use made of short code and message facilities.

Telex messages: £1.25 for up to 350 words.

Redupaging: No charge.

If you have a RT Redupager you can be paid automatically whenever a message is waiting in your mailbox.

International Mail: For the first 1,000 characters - 25p in Germany and Denmark, 50p in USA, Australia, Canada, Singapore, Hong Kong and Israel. For additional 1,000 characters - 15p, 25p.

These charges relate to the transmission of information by the Telecom service to other Telecom services outside the UK and the Isle of Man. Multiple copies of messages sent via same system but over only one transmission charge.

Billing and Payments: All charges quoted are exclusive of VAT. Currently, bills are rendered monthly.

Software over the telephone

MicroLink is setting up a central store of software programs which you'll be able to download directly into your micro. The range will include games, utilities, educational and business programs, and will cover all the most popular makes of micro.

Talk to the world - by satellite

MicroLink is part of the international Telecom network. In the USA, Australia and a growing number of other countries there are many thousands of users with electronic mailboxes just a few years. You can contact them just as easily as you do users in Britain - the only difference is that the messages from your keyboard go speeding around the world via satellite.

What you need to access MicroLink

You must have three things in order to use MicroLink: a computer (it can be any make of micro, hand-held device or even an electronic typewriter provided it has communications facilities), a modem (it can be a simple Fossil type using 1200/75 baud, or a more sophisticated one operating at 300/300 or 1200/1200 baud), and appropriate communications software.

MicroLink

in association with

TELECOM GOLD

Application Form

This form only apply to your MicroLink.

I/We ☐ I enclose my cheque for £8 payable to Database Publications as registration fee to MicroLink.

I/We ☐ I also wish to use Telex. I authorize you to charge an additional £10 to my initial bill for validation.

☐ I confirm that I am over 18 years of age.

Signature _____

Date _____

I intend to use the following computer _____

FOR OFFICE USE ONLY:

Mailbox assigned _____

Start date _____

Password _____

SEND TO:
MicroLink
Database Publications
Europe House
48 Chester Road
Hazel Green
Birmingham B67 8PY.

300

Name	
Position	
Company	
Address	
Postcode	
Telephone	

Comments/Comments of Service

Please indicate month of commencement ☐ 1 ☐ 2 ☐ 3

Payment

When Database Publications Ltd is the supplier of the services you are commencing and billing thereof will be handled by Telecom Gold as agents for Database Publications Ltd. One of the payment to be on 10th of month following commencement. Please complete billing authorization form A, B or C below.

A. Direct Debiting Mandate (Your full postal address of Bank Branch)

To	

I/We authorize you will further notice in writing for change to my/our account with you on or immediately after 10th day of each month (excepted amounts which may be debited thereto at the instance of British Telecommunications plc - TELECOM GOLD) by Direct Debit Bill on issued 10 days before charge is paid.

Name of Account to be debited	
Account Number	

B. Please debit my/our Account/VISA account number

--	--

I/We authorize you will further notice in writing for change to my/our account with you on or immediately after 10th day of each month (excepted amounts which may be debited thereto at the instance of British Telecommunications plc - TELECOM GOLD) by Direct Debit Bill on issued 10 days before charge is paid.

C. Please invoice the company/institution.

I/We ☐ I you select this option, which is ONLY AVAILABLE to government establishments and public limited companies, you will be sent an authorization form for completion which will require an official order number to accept unapproved amounts.

* Telecom Gold is a trademark of British Telecommunications plc.

Mega Deals

Compumart ATARI HARDWARE

Atari 800XL Computer & Atari 1050 Disk Drive
(inc. Home Fun Manager & Pay off Adventure & Atari Demos)

£234. ⁹⁵
+ p&p

Atari 800XL Computer

£84. ⁹⁵
+ p&p

Atari 1050 Disk Drive

£169. ⁹⁵
+ p&p

+NEW+ Atari 130XE Computer

£159. ⁹⁵
+ p&p

+NEW+ Atari 130XE Computer & Atari 1050 Disk
Drive (with 10 Blank Disks FREE)

£299. ⁹⁵
+ p&p

BLANK DISKS

Top Quality 5 1/4" Single Sided/Double Density Blank Disks
Buying in bulk has enabled us to supply these disks at the

Best Prices in the U.K.

With a LIFETIME WARRANTY

Box of 10 5 1/4" SS/DD Blank Disks including labels and write protect tabs

ONLY £9. ⁹⁵
+ p&p

Buy 5 Boxes and get a **FREE** Storage Case worth over £10!!

50 5 1/4" SS/DD Blank Disks in a **FREE** Perspex Storage Case

ONLY £49. ⁹⁵
+ p&p

Goods despatched same day . . . Disks 1st class post, Hardware - parcel post
Postage & Packing . . . Add £1.00 per box of disks, £2.00 per box of 50 and £3.00 per item of hardware

Please send cheques/postal orders to:-

Compumart, (Dept. AU 1)

71 Girceadies Road, Loughborough,

Leics. LE11 0GF Tel: (0506) 248859

Screen dumps **with the Atari 1**

WHAT a wonderful company Atari is turning out to be since J.T. took over a while ago. Just look at the range of disc drives, modems, monitors, computers, printers and so forth that are on offer today.

After salvaging my good and trusty 800 for a 120RE recently, which was a bit of a wrench, I decided to go the whole hog and increase my collection of Atari paraphernalia by one printer. The problem was, which one?

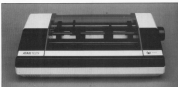
There were a number of choices, of course, from the Atari range of printers to Epson, Aghascom and Star, no name but a few.

In the end I decided to stick to the company known and loved so long. Why? Well, how about because they plug straight into the back of your computer without the need for an extra interface?

But which one should I go for? Should it be the letter quality 1027? No, lacking graphic ability. What about the 1030 or the 1035, 1038?

In the end I decided upon the new 1028. It's inexpensive at under £300. It is capable of printing five or 10 characters per inch and graphics among other things as well as looking

Anyway, off I went, cash in hand, and arrived home with the beast a while later. After reading through the instruction book a few times I must



confess that I was a little disappointed that I could not dump a screen to the editor's straight seat.

bioRxiv preprint doi: <https://doi.org/10.1101/110111>; this version posted November 1, 2016. The copyright holder for this preprint (which was not certified by peer review) is the author/funder, who has granted bioRxiv a license to display the preprint in perpetuity. It is made available under aCC-BY-NC-ND 4.0 International license.

Well, the 1029 is a dot matrix printer with a single printed line of sixteen dots high for 480 dots across.

Only seven stars high? Then have do you rated characters?

When in graphics mode, imagine
several lines both by one line wide

That's what you have to print to. The bottom line has the value of 1, the next line up 2, then 4, 8, 16, 32 and finally 64 for the top line.

That's right — no 1300

So if you want a single dot on the bottom line and a single dot on the top line you print CHR(55). See 1 for the bottom plus 55 for the top.

Now take this one step further. Try to convert the line search into a

1999, 2000, 2001, 2002, 2003, 2004, 2005, 2006, 2007, 2008, 2009, 2010, 2011, 2012, 2013, 2014, 2015, 2016, 2017, 2018, 2019, 2020, 2021, 2022, 2023, 2024, 2025, 2026, 2027, 2028, 2029, 2030, 2031, 2032, 2033, 2034, 2035, 2036, 2037, 2038, 2039, 2040, 2041, 2042, 2043, 2044, 2045, 2046, 2047, 2048, 2049, 2050, 2051, 2052, 2053, 2054, 2055, 2056, 2057, 2058, 2059, 2060, 2061, 2062, 2063, 2064, 2065, 2066, 2067, 2068, 2069, 2070, 2071, 2072, 2073, 2074, 2075, 2076, 2077, 2078, 2079, 2080, 2081, 2082, 2083, 2084, 2085, 2086, 2087, 2088, 2089, 2090, 2091, 2092, 2093, 2094, 2095, 2096, 2097, 2098, 2099, 2100, 2101, 2102, 2103, 2104, 2105, 2106, 2107, 2108, 2109, 2110, 2111, 2112, 2113, 2114, 2115, 2116, 2117, 2118, 2119, 2120, 2121, 2122, 2123, 2124, 2125, 2126, 2127, 2128, 2129, 2130, 2131, 2132, 2133, 2134, 2135, 2136, 2137, 2138, 2139, 2140, 2141, 2142, 2143, 2144, 2145, 2146, 2147, 2148, 2149, 2150, 2151, 2152, 2153, 2154, 2155, 2156, 2157, 2158, 2159, 2160, 2161, 2162, 2163, 2164, 2165, 2166, 2167, 2168, 2169, 2170, 2171, 2172, 2173, 2174, 2175, 2176, 2177, 2178, 2179, 2180, 2181, 2182, 2183, 2184, 2185, 2186, 2187, 2188, 2189, 2190, 2191, 2192, 2193, 2194, 2195, 2196, 2197, 2198, 2199, 2200, 2201, 2202, 2203, 2204, 2205, 2206, 2207, 2208, 2209, 2210, 2211, 2212, 2213, 2214, 2215, 2216, 2217, 2218, 2219, 2220, 2221, 2222, 2223, 2224, 2225, 2226, 2227, 2228, 2229, 2230, 2231, 2232, 2233, 2234, 2235, 2236, 2237, 2238, 2239, 2240, 2241, 2242, 2243, 2244, 2245, 2246, 2247, 2248, 2249, 2250, 2251, 2252, 2253, 2254, 2255, 2256, 2257, 2258, 2259, 2260, 2261, 2262, 2263, 2264, 2265, 2266, 2267, 2268, 2269, 2270, 2271, 2272, 2273, 2274, 2275, 2276, 2277, 2278, 2279, 2280, 2281, 2282, 2283, 2284, 2285, 2286, 2287, 2288, 2289, 2290, 2291, 2292, 2293, 2294, 2295, 2296, 2297, 2298, 2299, 2300, 2301, 2302, 2303, 2304, 2305, 2306, 2307, 2308, 2309, 2310, 2311, 2312, 2313, 2314, 2315, 2316, 2317, 2318, 2319, 2320, 2321, 2322, 2323, 2324, 2325, 2326, 2327, 2328, 2329, 2330, 2331, 2332, 2333, 2334, 2335, 2336, 2337, 2338, 2339, 2340, 2341, 2342, 2343, 2344, 2345, 2346, 2347, 2348, 2349, 2350, 2351, 2352, 2353, 2354, 2355, 2356, 2357, 2358, 2359, 2360, 2361, 2362, 2363, 2364, 2365, 2366, 2367, 2368, 2369, 2370, 2371, 2372, 2373, 2374, 2375, 2376, 2377, 2378, 2379, 2380, 2381, 2382, 2383, 2384, 2385, 2386, 2387, 2388, 2389, 2390, 2391, 2392, 2393, 2394, 2395, 2396, 2397, 2398, 2399, 2400, 2401, 2402, 2403, 2404, 2405, 2406, 2407, 2408, 2409, 2410, 2411, 2412, 2413, 2414, 2415, 2416, 2417, 2418, 2419, 2420, 2421, 2422, 2423, 2424, 2425, 2426, 2427, 2428, 2429, 2430, 2431, 2432, 2433, 2434, 2435, 2436, 2437, 2438, 2439, 2440, 2441, 2442, 2443, 2444, 2445, 2446, 2447, 2448, 2449, 2450, 2451, 2452, 2453, 2454, 2455, 2456, 2457, 2458, 2459, 2460, 2461, 2462, 2463, 2464, 2465, 2466, 2467, 2468, 2469, 2470, 2471, 2472, 2473, 2474, 2475, 2476, 2477, 2478, 2479, 2480, 2481, 2482, 2483, 2484, 2485, 2486, 2487, 2488, 2489, 2490, 2491, 2492, 2493, 2494, 2495, 2496, 2497, 2498, 2499, 2500, 2501, 2502, 2503, 2504, 2505, 2506, 2507, 2508, 2509, 2510, 2511, 2512, 2513, 2514, 2515, 2516, 2517, 2518, 2519, 2520, 2521, 2522, 2523, 2524, 2525, 2526, 2527, 2528, 2529, 2530, 2531, 2532, 2533, 2534, 2535, 2536, 2537, 2538, 2539, 2540, 2541, 2542, 2543, 2544, 2545, 2546, 2547, 2548, 2549, 2550, 2551, 2552, 2553, 2554, 2555, 2556, 2557, 2558, 2559, 2560, 2561, 2562, 2563, 2564, 2565, 2566, 2567, 2568, 2569, 2570, 2571, 2572, 2573, 2574, 2575, 2576, 2577, 2578, 2579, 2580, 2581, 2582, 2583, 2584, 2585, 2586, 2587, 2588, 2589, 2590, 2591, 2592, 2593, 2594, 2595, 2596, 2597, 2598, 2599, 2600, 2601, 2602, 2603, 2604, 2605, 2606, 2607, 2608, 2609, 2610, 2611, 2612, 2613, 2614, 2615, 2616, 2617, 2618, 2619, 2620, 2621, 2622, 2623, 2624, 2625, 2626, 2627, 2628, 2629, 2630, 2631, 2632, 2633, 2634, 2635, 2636, 2637, 2638, 2639, 2640, 2641, 2642, 2643, 2644, 2645, 2646, 2647, 2648, 2649, 2650, 2651, 2652, 2653, 2654, 2655, 2656, 2657, 2658, 2659, 2660, 2661, 2662, 2663, 2664, 2665, 2666, 2667, 2668, 2669, 2670, 2671, 2672, 2673, 2674, 2675, 2676, 2677, 2678, 2679, 2680, 26

[illegible][illegible]

1991-1992 00000 0.0, 1.700, 0.0, 0.0, 1990, 1990, 0.0, 1.700,
0.0, 1.0, 1990, 1990, 0.0, 1.700, 0.0, 1990, 1990, 0.0, 1990, 1990,
1.700
1991-1992 00000 0.0, 0.0, 1.0, 1.0, 1.0, 0.0, 1.0, 1.0, 1.0,
1.0, 1.0, 0.0, 1.0, 1.0, 0.0, 1.0, 1.0, 1.0, 1.0, 1.0, 1.0,
1.0

[illegible]

```

10 COMPETE IN
20 FOR 100 TO 200 STEP 10
30 FOR 1000 TO 1,000,000 STEP 1,000,000
40 FOR 1000 TO 10 STEP 10
50 FOR 1,000,000 TO 1 STEP 1,000,000
60 FOR 1000 TO 10 STEP 10
70 END

```

1029



By MICHAEL KING

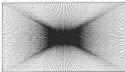


Figure 1: Printout made by using Programs 1 and 2 together.

screen information, standard 8 bit horizontal bytes, to the 7 bit vertical bytes understood by the 1029. That's a lot of bit manipulation if you want to print out a whole screen.

Well, for all of you who have been out and panted with your well-earned cash for the 1029, look no further. Type in Program 1 and save it to disc before putting it to use.

This is only a subroutine, and must be used together with your own program to set up your own picture screen.

If you would like an example, type in Program 2, which will set up a graphics 8 screen with a basic design scribbled all over it — see Figure 1.

Just set the variable **OFFSET** to a value between 0 and 160. This is the offset of the picture on the paper left to right.

If you wish your masterpiece to occupy the left edge of the paper, then set **OFFSET** to 0, or to occupy the right side of the paper set it to 160. But for a centered picture, rather nice, **OFFSET** should be 80.

Ensure your 1029 is on and type **RUN**. The whole screen will be dumped to the printer.

PROGRAM STRUCTURE

```

20000 Finds the screen address, sets the variable
      IOCB to use the IOCB number 1 and checks
      to see if OFFSET is within the range 0 to
      160.
20010 Uses a little trick that gives Atari Basic an IF...
      THEN...ELSE statement. If
      PEEK(1670)=8 (converter loaded) THEN
      control will be passed to line 20020 ELSE
      the rest of line 20010 will be acted upon and
      the converter will be read into page 0.
20020 Start of the loop that spaces the printer and
      prints the line headers to the printer.
20025 There's that ON GOTO trick again. Prints the
      OFFSET number of blank pixels to the paper.
      The USR call. Also adds 280 (7 * 40) to the
      variable SCREEN to give us the next
      printable line.
  
```

*The rest of the program is
the data for the converter.*

LAST month we looked at the instruction set of the 68000 microprocessor. And, just as man cannot live by bread alone, neither can a microprocessor live by instruction alone.

What gives an instruction set its power is the addressing modes associated with it.

This is because an instruction identifies the operation to be performed – such as add and subtract – but the addressing mode explains where the operation is to be performed.

The best instruction set in the world is no good without a variety of addressing modes.

Basically the action of an instruction can be based in one of two places – either an on-chip register or an off-chip memory location.

There are two different types of on-chip registers in the 68000. These are the address registers and the data registers. Off-chip memory can be specified with a 32 bit address although only 24 bits are used in the 68000.

Registers can be thought of as temporary storage to be used while bit patterns are being manipulated, whereas off-chip memory is used for more permanent data as well as storing the program and accessing the hardware.

So why do we need different types of addressing mode? The answer is to cope with different programming problems.

The best way to understand the different modes is to look at each in turn and see how they can help us.

First, the form most assemblers use when handling address information for this processor. This consists of three basic parts –

- The instruction mnemonic and length of operation – byte, word, long word.
- The source – where the data is to be taken from.
- The destination – where the result is to be placed.

The art of programming is to tie these three things together to perform as you want without typing yourself in knots.

The manner in which the source and destination are specified is known as the addressing mode. This calculates an address which is known

as the effective address. It is this effective address that is used.

Let's take the simplest addressing mode, that of Register Direct.

This simply uses the registers to hold the data. For example, if you wanted to move the data from data register D3 to address register A5, you would use the register direct addressing mode for both source and destination.

Assemblers might differ in syntax, but typically the form would be:

MOVE.W D3,A5

which means move the word – 16 bits – FROM data register 3 TO address register 5.

In fact there are two variants of the same mode being used here. They are Data Register Direct for the data register and Address Register Direct for the address register.

The Address Register Direct addressing mode is used mainly in the

housekeeping parts of a program or to operate on temporary storage areas.

Now in order to write any type of program you need to be able to cope with constants, even if only to set up the initial value of a variable.

A constant is a value that is known at the time you write the program – we say that it is "known at compile time".

So when the assembler turns all the mnemonics into the binary bit patterns of machine code instructions, the number we want to use is known.

What happens is that the assembler places these numbers alongside the instructions in the body of the program. The values to use follows immediately after the instruction.

Hence the name of Immediate Data Addressing. Its main use is to initialise counters or variables. For example, suppose we want to set up



Addressing modes of the 68000 microprocessor

In Part II of his series examining the powerful 68000 chip at the heart of the Atari ST, MIKE COOK examines its versatile addressing modes

data register D1 with the value 9 we would write:

```
MOVE.B #9,D1
```

that is, move the byte - 8 bits - into data register D1. The #9 before the number tells the assembler to treat what follows as an immediate decimal value.

In fact there are two types of immediate addressing mode - Immediate and Quick Immediate. The quick mode incorporates the value into the instruction, whereas the normal mode adds the value at the end of the instruction bytes.

Only limited number values can be used with the quick mode, but any assembler worth its salt will choose the quick mode if the numbers are within the restricted range.

Therefore you do not have to worry too much about the difference between them.

To handle a variable you must be able to access off-chip memory. Most of the time you know what address you want to use, just as in a high level language you know what name the variable is. We say the address is known at compile time.

To do this you can use the Direct Memory Addressing mode. This takes a value and compiles it next to the instruction just like the immediate mode. The difference is that when the number is used it is taken not as a value but as the address where a value is to be found.

For example, to move the value in memory location 8 into data register D4 you would use:

```
MOVE.B 8,D4
```

where 8 indicates that what follows is the hexadecimal value of the memory address from which to take the data.

Again there are two types of this addressing mode - Absolute Short and Absolute Long. The difference lies in how many extra bytes are used to specify the address.

Basically, the short mode is used when you want to address the first or last 32k of memory - where you can get away with specifying the address in two bytes - otherwise you need the long mode - which specifies the address in four bytes. Again, any semi-decent assembler should

choose the correct one for you.

In many cases the address of a variable is not known at compile time.

This may be where you want to apply the same operation to many different variables. In high level languages you would use an array with a fixed name and a variable subscript. In machine code you would use a form of indirect memory addressing of which there are five different variants.

Indirect Memory Addressing is therefore the most complicated of the addressing modes.

The simplest of this complex bunch is the Register Indirect mode.

In this mode a register holds not the value but the address of a value. We say that the register points to a memory location, of course before this mode is used the register must be set up to point to the area you want.

For example, suppose we wanted to clear a section of memory. Then we could set up the address of the start of our section in memory in address register A0 and then perform:

```
MOVE.B #0(A1)
```

The brackets indicate not to use the register itself as the destination but what the register points to.

We can then increment the register, jump back and perform the same instruction. This time we clear the second byte of our memory.

We can add a constant on to the value in a register by using the Register Indirect with Displacement Addressing mode. This allows you to access memory locations up to 32k either side of that pointed to by the register.

This can be useful if we want to access a particular element of an array whose address is variable.

Note that the displacement can be zero, in which case the addressing mode would be in effect the same as the simple register indirect mode. To indicate this it is usual to place the displacement outside the brackets, so:

```
MOVE.B #0,0(A1)
```

which clears the byte at locations away from that pointed at by the address register.

Perhaps the most complex addressing mode of all is Register

Indirect with Displacement and Index.

This works like Register Indirect with Displacement but with the addition of another value. The effective address is the sum of the displacement, the contents of an address register and the contents of a data register - the index bit. When all three have been added the result defines the location to use.

As it is quite a complex mode, any example to illustrate it is going to be complex, but here is one case where I have used this mode in anger.

I had a digitised picture and I wanted to count how many pixels I had of each brightness level. So I set up an address register (A3) to point at the start of an array whose elements were the brightness levels and whose contents were the number of pixels at that level.

I then put the pixel brightness level into a data register (D3) and performed:

```
ADD.B #1,0(A3,D3)
```

This added the value 1 to the memory pointed at by the sum of A3 and D3.

The displacement was not needed and so could be zero. As there were many such arrays in my system, once A3 was primed with the correct value the same code could be used for all arrays.

There are two more modes in this section - Post-Increment Register Indirect and Pre-decrement Register Indirect. They are quite a mouthful but basically are variants of the simple form of indirect addressing.

One mode increments the actual register after performing the operation, and the other mode decrements the register before performing the operation.

These two modes are usually used together to form a push-down stack in memory. As any of the address registers can be used in this mode it gives us up to eight different stacks. This allows us to pass parameters to subroutines on stacks. This is just what is needed when implementing the high-level language Fort.

Basically, to push data from D0 on to a stack pointed at by A5 you

would use:

MOVE.L D0,-(A6)

To recover the data back into D3 then:

MOVE.L +(A6),D3

As you can specify byte, word or long word operations the increment values are one, two and four respectively. This also allows you to process an array or string a single element at a time.

Relative addressing does not mean "Dear Auntie Rose" but is a mode of specifying an address relative to the instruction in the program.

I am sure you have played Monopoly and received the card "Go back three places". Well, that is relative addressing, your destination depends upon where you are.

In most processors this is reserved for program branching, but in the 68000 it can be used with many

different instructions.

The purpose of this is to enable you to write code that is position independent. That means that the code can run when placed anywhere in memory. This is necessary in overlay systems where memory to run programs is dynamically allocated to a memory allocation program.

Code can be moved in from disc to an area of memory when needed. It can then stay in the memory after use unless some other program needs more space in which case it is purged (removed).

As the free memory - known as a heap - is always changing it is essential that programs must be position independent.

There are two types of relative addressing - one that specifies a displacement and one which uses an index value as well as a displacement.

Normally you will access these through labels in your assembler

program and the assembler will look after calculating the displacements at compile time.

The final addressing mode is the simplest one - Implied Register Addressing. The register to use is specified in the instruction. This is a catch-all mode for those instructions that alter the status register, program counter or stack pointer.

The register to use is part of the instruction itself, so will not trouble you further.

Mastering the addressing modes is 90 per cent of being a good machine code programmer and sound knowledge of what each one does is essential. As you can see, the 68000 provides a comprehensive collection of addressing modes which can be used as both source and destination in many instructions.

Next time we will look at the overall environment the 68000 presents to the programmer.

TWO WAYS TO ENSURE YOU GET

ATARI USER

EVERY MONTH

1. Complete and mail subscription form on Page 61.
2. Hand this form to your newspaper.

Please enclose two copies of Atari User magazine every month until further notice.

- ☐ I will collect
☐ I would like it delivered to my home.

Name _____
 Address _____

Note to newspaper: Atari User should be obtainable from your local wholesaler, or contact Steve Fletcher, Circulation Manager on 0494 97466.

STOCKSOFT

FOR US

Many more going? Don't let the 1 month in the stock in this way you can to make your business.

CONTRACT

For the 100 pages in contract, you will be able to use your personal credit with no interest. You can also use your credit to make your business. You can also use your credit to make your business. You can also use your credit to make your business.

FOR

Many more going? Don't let the 1 month in the stock in this way you can to make your business.

FOR

Many more going? Don't let the 1 month in the stock in this way you can to make your business.

FOR US

Many more going? Don't let the 1 month in the stock in this way you can to make your business.

CONTRACT

For the 100 pages in contract, you will be able to use your personal credit with no interest. You can also use your credit to make your business. You can also use your credit to make your business.

FOR

Many more going? Don't let the 1 month in the stock in this way you can to make your business.

FOR

Many more going? Don't let the 1 month in the stock in this way you can to make your business.

CONTRACT

100 Westside Road, Birmingham B10 1ST

BULLOCK SOFTWARE

FROM SOFTWARE SPECIALISTS FOR OVER 20 YEARS



OUR LATEST TITLE IN STOCK
"LANDS OF MAYOC". ST available soon
 Contract 0194 8444 0400 0400

Phone 021-782 3189

Send for lists of competitive prices

Pay by Cheque/Ven/PO's

884 Westwood Heath Road, Ward End,
 Birmingham B8 2AB

LOGO IS AN EXTENSIBLE LANGUAGE

says DEREK RADBURN

WORDS and lists are what makes Logo tick. They may not be as well known as turtle graphics, but it is worth remembering that turtle graphics was developed in a word and list environment.

In Atari Logo almost all aspects of list processing are present, the exceptions being TEXT and DEFINE. The purpose of this article is to show something of what is possible in Logo, using words and lists.

To begin with, Logo is an extensible language. You can make the system larger and more powerful. I will illustrate what I mean by looking at its conditional test.

Logo's test is one found in many programming languages, the IF condition: true THEN do this and, optionally, ELSE do this. Let's illustrate this:

```
TO ENTER
TYPE "What shape do you want? (S or
T) MAKE "KEY RC
IF NOT (S=KEY) * "S=KEY * "T PRINT
(You must respond with S or T)
WAIT 50 ENTER
END
```

All that this very trivial procedure does is to ask for some input, create a variable called KEY to hold the response, and then test the value of that variable to ensure that it's what is asked for.

There are several things to note about this. First, in this example the THEN branch is a list and the optional ELSE list is not present.

Second, input is handled by RC, ReadCharacter, which always outputs a single character word. Notice also the use of TYPE instead of PRINT — can you write out why?

Third, by using OR it is possible for

IF to check two conditions and output true if either is found.

It is possible for OR to take more than two inputs. To do this, OR has to be preceded by a parenthesis, i, and the list of conditions terminated by a closing parenthesis, l.

When a Logo primitive, which normally takes two inputs, is used in this way with more than two inputs, it's known as a "greedy procedure".

These might make writing procedures easier, but they have their price when things go wrong — error messages tend to be misleading.

Now one thing which is useful to have is a conditional test which allows an action to be carried out once before a test is invoked. The structure for this is DO action UNTIL condition. It is quite easy to write such a test in Logo.

```
TO DO :ACTION :CONDITION
RUN :ACTION
IF RUN :CONDITION GOTO :DO
:DO :ACTION :CONDITION
END
```

DO takes two lists as its inputs. Let's put it to use:

```
TO SPIN
DO 500 RT 270
END

TO GO
REPEAT 4 [RT 90 RT 90]
END

TO MORP
TYPE "Again? ] MAKE "KEY RC
IF NOT (KEY = "Y) [SP "TRUE] [SP
"FALSE]
END
```

Notice here the use of the

colon slash. This stops the Logo interpreter from processing the character following it.

Another point to note is the use of NOT in the IF test.

Finally, OR is short for OutPut which causes the procedure to terminate, sending back the item following OutPut to the calling procedure or command level — top level.

The DO procedure is an example of tail recursion. Recursion is a process which often gives problems in getting to grips with understanding it. Essentially, recursion exists in ordinary everyday life.

Think about walking:

```
TO WALK
MOVE OPPOSITE FOOT IN FRONT OF OTHER
WALK
END
```

I do not suggest you type this into your Atari, but it does, I suggest, put a Logo type of form to an everyday recursive activity.

As you have probably noticed, the particular quality of a recursive procedure is that it has, as part of its definition, a call to itself.

This is not the same as a REPEAT loop. Recursion produces many images and uses a lot of memory. The REPEAT loop does not.

Often, in explanations of Logo, recursion is used to do trivial things in turtle graphics where the use of the REPEAT loop would be far more appropriate and economical.

Here is an example of recursion being used to manipulate a word or

list, together with some new Logo commands:

```
TO REV :OBJECT
  IF EMPTY? :OBJECT [IF WORD? :OBJECT
    OP * 3 OP 133]
  IF WORD? :OBJECT [OP WORD LAST
    :OBJECT REV BL :OBJECT]
  IF LIST? :OBJECT [OP LPUT REV FIRST
    :OBJECT REV BF :OBJECT]
END
```

If you're not clear what this procedure does try typing `PR REV 3` `LOVE` `ATARI` `LOGO!`.

Let's try to analyse and explain what's happening. First, notice `REV`'s needs to be given two things. The first is something which can use any output which arises from `REV`, the second is an input for `REV` to operate upon.

The first line of `REV`, as distinct from its title line, checks to see whether the input `:OBJECT` is empty. If it is, it chooses either an empty word, or list to be output, which terminates that call to the procedure.

The second line turns to see if the input to `REV` is a word. If it is, it builds a new word by taking the last letter of the input and joins it to the results which come from using `REV` with the `ButLast` — everything but the last letter — of the input.

The third line tests to see if the input is a list. In this event the first item of the list is subjected to another call to `REV` and then a new list is built up by placing the results at the end using `LPUT` — `LastPUT` — and then using `REV` on the `BF` — `ButFirst` — of the original input. This application of recursion is known as *total recursion*.

If this example seems rather complex it is because it is a very generalised procedure capable of handling both words and lists, without the user needing to distinguish them.

It's important here to note that the Logo system sees words and lists as being very different. Try this example:

```
PR 'same
```

and this:

```
PR :same
```

What you should see is no apparent difference.

But now, try this:

```
IF 'same = :same [PR
  'same] [PR 'different]
```

Now you know!

It is important to know where each

‘The Logo system sees words and lists as being very different’

data type may be used. `WORD` joins only words together to form one word, `SE`, or `SENTENCE`, joins either words or lists. It's word to word, or word and list, or list to list, the result output is one list.

With either `FPUT`, `FirstPUT`, or `LPUT` there are also two inputs. The first can be a word or a list, but the second must be a list.

The resultant output is either, in the case of word to list, a list with an embedded list and a word, or in the case of list to list, a list with two lists embedded in it.

I want to finish by showing how Logo and lists can be used for numeric manipulation. The three procedures which follow will generate all of the prime numbers up to a chosen level. Try using `PR PRIME 50`. You should get your results very quickly.

```
TO PRIME :N
  IF EMPTY? :PRIMELIST [OP 'TRUE]
  IF EQUAL? 0 :MODULO :N FIRST
    :PRIMELIST [OP 'FALSE]
  OP PRIME :N BF :PRIMELIST
END
```

The function of this procedure is to take a number and check whether it is a multiple of any of the prime factors provided in the second input.

If there is no remainder after division then the number is not prime and `'FALSE` is output.

By recursion, the procedure runs down the list of factors until, if the list is empty, then the number must be prime and `'TRUE` is output.

```
TO SIEVE :N :L
  IF :N < 1 [OP :L]
  IF AND PRIME? :N = 1 [L PRIME :N +
    1 :L] [OP LPUT :N + 1 LPUT :N = 0
    :SIEVE :N - 1 :L]
  IF OR PRIME? :N + 1 [L PRIME :N -
    1 [L OP PRIME :N + 1 :L] [OP LPUT
    :N + 1 :SIEVE :N - 1 :L] [OP LPUT
    :N = 1 :SIEVE :N - 1 :L]
  OP :SIEVE :N - 1 :L
END
```

It will be necessary to type this in

the editor, by typing `ED 'SIEVE`, since there is not the limit on individual line length there which exists at top level.

This is the procedure where the "business" is done. The algorithm being used here makes use of the fact that, apart from 2 and 3, all primes are adjacent to multiples of 6, hence the progressive subtraction of 6, and the examination of numbers one more or one less than $6N$.

There are three conditions which the procedure has to handle. The first is where both adjacent numbers are prime, this is dealt with in the second line, the second is where only one adjacent number is prime — line three — and finally where neither is prime — line four.

At the end of each of these lines there is a recursive call to `SIEVE` with $6N$ decremented by 6.

```
TO PRIME :N
  OP :SIEVE :SQUIT :N - 61 :L + 6 + 61
  :SIEVE :SQUIT :SQUIT :N :L + 6 + 12
  :L]
END
```

The function of this procedure is to present `SIEVE` with suitably prepared inputs — notice one of those is actually a call to `SIEVE` itself.

The first input is a complex expression which, when evaluated, gives `SIEVE` the next multiple of 6 above the initial input of `PRIME`.

The second input is the output which results from a call to `SIEVE`, which produces the list of prime factors, this early call has 3 and 3 as its initial prime factors.

Also Logo does not have a `QUOT` operator, so you will have to write it:

```
TO QUOT :N :D
  IF :N BF :D / :D
END
```

Try this out, and see what the largest number is that it can handle before the system runs out of memory.

Try out some procedures of your own. I would be interested in hearing about what you produce.

I **WROTE** I must write to explain to beginners who are finding difficulty getting programs to run which they have typed in from magazines.

When I started typing in programs from magazines three years ago I encountered exactly the same problems.

I would check the typing and my typing habits at times and not find any errors, so I would write off to the magazine concerned.

I would receive a reply saying that I had made a mistake. So I would check my listing again and again and sometimes after hours I would spot a silly typing error, say a letter Q, which should have been a zero.

All I can say is check your typing very carefully and I am guarantee you will find the error eventually. I still make typing errors even now.

I can't understand why Sir B. Shuttle from Kent does not like Atari's characterisation methods. I and thousands of other Atari owners find Type II a godsend in pin pointing typing errors. — **Paul Corbett, Burton-on-Trent.**

■ We're thinking of reprinting this letter every month. If you are one of the many people who have written with problems in getting the listed programs to run, believe us Paul is right.

When we find genuine bugs in the programs we'll print corrections.

Wanted — a full list

I **WOULD** like to say thank you for a fine first issue of Atari User and to say that you have now filled a void in the shelves of my local newspaper.

In spite of owning a number of books on the Atari micro, I have not been able to find a full list of error messages, and even with some of the ones that I do have I have been unable to diagnose the situation in which they are written.

I would suggest that if you could rectify this shortcoming in future issues of Atari User you would earn the gratitude

The golden road to successful listings

of many of your readers. — **T.J. Hurley, Liverpool.**

■ Some of the error messages are quite inaccurate, aren't they? Our favourite is ERROR 644. We'll bear your suggestion in mind.

Clean out of REMs

WOULD I bought the July issue of Atari User. I typed Bomb Run into my BBC, and at the end I typed REMs.

Every time I pressed the Return button the computer kept putting up "Error 12 at line 88".

I know that the 12 means that it cannot find line 88.

It did it on the Submarine game, and this time it said "Error 12 at line 88". I have checked these two games over and over again.

Could you please tell me how I can make these games run. — **Paul Lynch, Birmingham.**

■ Both line 88 of Bomb Run and line 88 of Submarine QDOS is a REM statement.

We suspect you've entered

these games without bothering to type in the REM statements.

With many listings this would be fine, but in both these cases the program authors have chosen to jump to a REM.

Typing in the missing line numbers with just the word REM so there should cure your problems without too much extra typing.

Odd dice

WOULD I was reading the June edition of Atari User I noticed that in Random Thoughts on Page 84 the two dice are wrongly placed.

On all dice opposite sides add up to 7. From the numbers visible on both dice this rule does not apply. — **Philip Smith, Walsall.**

■ At least it shows that gambling isn't one of our vices.

Poor service

HOW pleased I am to see that we have now got a great magazine, Atari User.

I was feeling sorry that I had

changed my computer to the Atari until I got your first edition.

What had got me fed up was the goodness of Atari UK in Slough.

In January of this year I sent a tape of a program that I was having trouble with and so we had the document to reply or send my tape back.

After trying loads of times to contact Helpdesk by telephone — I was always asked to send to someone who promised I would be written to in two weeks.

I don't know which century they meant the two weeks to be in, because I will have heard nothing.

Two weeks ago I got in touch with customer relations at Slough, who told me I'd sent another copy of the program they would give it urgent attention.

But then again — silence. In my opinion, if Jack Poulton wants to send his computer in the UK he should come and see things out at

Illumination on luminance

I **JOEY** owned an Atari 8000. For two months and have just seen your article on graphics modes (issue 1).

Being a beginner I typed in listing 3 and found it only showed one luminance, so I set down and worked out a listing for each colour and luminance. I think it will come in handy for other Atari beginners.

To pass on Control's 3. — **C.M. Hampson, Nottingham.**

10 PRINT CHR\$(205.5)

20 FOR ROW TO COLUMN ROW TO 24 STEP 2

30 IF ROW THEN SETCOLOR 1,14,0

40 IF ROW THEN SETCOLOR 3,0,0

50 POSITION 12,12:PRINT 0,0

60 POSITION 12,12:PRINT "COLUMN LUMINANCE"

70 SETCOLOR 3,0,0:FOR C=0 TO 15:PRINT C:PRINT C:PRINT C:PRINT C

80 GRAPHICS 0:PRINT "END, 12:PRINT "END"

Atari! Y/E, it's no wonder *Wizards* had to go down with the terrible Atari game.

I don't suppose I am the only one who has suffered these difficulties with Atari. If there are others, I would like to hear from them — and I will send their complaints along, with my love, to Atari in America who are personal friends of Jack Tramiel. — **G. Whitaker, Swinton, Manchester.**

Room for improvement

I WOULD like to congratulate you on producing such a good magazine and wish you good luck for the future.

But I feel that the magazine could be improved in several ways. Although it is well presented I feel the subjects are aimed too much at novice and beginning computerists rather than the veteran Atari programmers.

Do please could you try to broaden your horizons and show us what the Atari really is capable of.

Topics you could cover are: stretching, display list interrupts, vertical blank interrupts, assembly language routines and complete graphic techniques.

Also, how about some photographs in your software review section.

Other than that I feel that your magazine is excellent value and is just what our kind of readers need — I mean, who wants to pay three quid for an American Atari magazine? — **Steven Harris, Horwich, Lancs.**

Why am I locked out?

WHEN I use my Atari 800XL, it sometimes locks up.

It just stops — you can't type anything at all. Even if you press Reset it will not clear the screen.

The only thing you can do is to switch off the computer —

ATARI USER Mailbag

WE welcome letters from readers — about your experiences using the Atari micros, about tips you would like to pass on to other users... and about what you would like to see in future issues.

The address to write to is:

**Mailbag Editor
Atari User
Europe House
66 Chester Road
Maxwell Grove
Stockport SK7 5NY**

and this can make me quite mad, because I love the program on the computer.

Could you please explain why this happens?

Basically, could you tell me what the Help button is? It does not seem to do anything.

— **P. Cartledge, Church Lawton, Stoke-on-Trent.**

■ If your machine 'locks up', you should take it back to your dealer and explain the problem.

For information on the Help key, see our July issue, Page 57.

Not for homework

COULD you tell me if it is possible to record sounds produced by my computer in the audio channel on my TSTO cassette recorder, and then to use these sounds while loading programs?

This was instigated by Elizabeth Gandy in her review of "Emuworld" in Level 3 in Issue No. 1. — **David S. Barker, Derby.**

■ No, it's not possible to record sounds from your programs into your recorder.

Elizabeth was referring to programs like Atari's commercial language series which have an audio track alongside the program track on the tape.

This audio track is just an using specialised recording equipment — not the sort of thing you could do at home.

Check-sum a good idea

I HAVE now received both my May and June issues of Atari User and found them very interesting, particularly liked the 12 page feature on computer communications, and wish I could afford a monitor, because it looks great fun.

I think a check-sum program is a good idea, I was going to write and suggest the idea myself but I got busy to it.

They have a lot of time and frustration and machines are often put off as I was if a program doesn't work after hours of typing.

Please get one soon.

I have a couple of suggestions. My first is that your program be made available on cassette as well as disc.

I think this is a great idea having all the programs on a disc, but as not many of us can afford disc drives I think a cassette would please many people.

In future issues I would like to see a private add page for readers to advertise their computer equipment and games.

I have seen this sort of thing in other magazines and I think it is a great idea. Apart from these two suggestions I think your magazine is great. — **Luke Hellingiers, Kirby Muxlow, Leicestershire.**

Making it childproof

AFTER typing in the *Atariuser* Train I found a problem. If the user has not got a joystick, the Break key can easily be pressed by a very enthusiastic child, thus ending the program.

If you insert the following lines they will stop this from happening:

Lines 150 & 915, POKE 16,0: POKE 5374,0

As the program takes up nearly all of the 1K, it will be necessary to delete some of the ROM statements if the user has not got a machine over 1K. — **Kelvin S. Guffy, Rayleigh, Essex.**

Monitor questions

CAN you plug in a monochrome monitor and use it at the same time as a TV display — the monitor for text and the TV for graphics?

Which monochrome monitors can be used with the Atari 800XL, and which have standard connecting cables — if any?

Do 80-column monitors show 40 character lines?

Is there any way of making the 800XL show an 80 character line on a suitable monitor by using Fast and Pokey, or a machine-code routine? — **J. Smart, Hinton, Herts.**

■ Yes, you can connect a monitor and a TV at the same time, but you will get the same picture on both — only in colour, only in black-and-white.

Any monitor with a composite input connection — that is, almost any monochrome monitor — will work. Cables will probably be wired up as extras, or contact an Atari dealer for a ready-made cable — stating the make of monitor you have decided on.

The picture is generated by the computer, and the monitor just displays it. Hence, any monitor, whatever the number of characters it can display,

will only show you 40 characters per line if that is all you need in to it.

There have been programs which put 80 columns on to a Graphics II screen - but they are very slow and complex, and in machine code. Try your local user group to see if they have one, or perhaps someone would care to write in with one!

CG610 you please recommend a good colour monitor with sound output for the Atari 800X? I can afford to pay about £200. — **Paul Baskins, Belfast.**

As above, any monitor with a composite video input will do. Ferguson do a nice one, as do a number of other companies. We recommend, strongly enough, the Commodore monitor designed for CBM-84, at between £290 and £330.

Software suits

I AM very pleased with your magazine, especially Mailbag and the lengthy software reviews. Keep it up.

In the July edition you gave a report on the new DOS 2.5. You said that it would be free, and to ring the Atari Helpdisc during office hours to find my nearest user group or retailer who would be able to put DOS 2.5 onto one of my own blank discs.

I rang the Helpdisc to find out where my nearest user group or retailer was. They told me that I might have to pay \$50 or more but to come then a journal to have it transferred in to one of my own discs.

I was satisfied with this and they told me that my nearest retailer was in Letchworth.

I went there with my blank disc, but they told me that no way could they put a copy of DOS 2.5 onto my disc for me. They told me it would be around £3 and that they didn't have it in stock. They said that they were expecting it in at any moment.

I have been in again and they are selling it at £2.25 on Minidisc discs with a label

DAMN you for Britain's most reliable "Atari only" magazine.

I bought the first issue out of curiosity, and shortly afterwards found myself buying the second - it must be good.

I'm glad to see you are trying to catch the interest of the younger Atari users - something which hasn't been the custom in the past.

The varied editorials are most interesting, but how about some short demo programs in assembly to allow

deciders like myself to get to grips with the Assembler before cartridge?

I have a tip for all Home Filing Manager owners. If concerning the annoying house video physical printout on Epson type printers.

Having spoken to Atari's Helpdisc, who verified that it was not possible with an easy software fix, I decided to have a go on the hardware front.

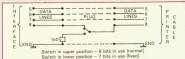
The solution lies in the fact that the characters are sent to the printer in inverse Atari codes. That is, decimal 128 to

255. These generate a 1 in the eighth bit of the parallel interface.

So by grounding the data 8 wire in the printer cable the eighth bit now becomes a 0 and the printer receives decimal codes from 0 to 255.

A miniature single pole double throw switch now resides in my printer plug resulting in 7 or 8 bit operation to suit any program.

I hope this modification is of some use to other readers with this problem. — **R.B. Moss, Hatfield, Cheshire.**



short in saving DOS 2.5.

I am very disappointed at this because I think there is a lot of difference between three pounds and one pound. Atari software isn't cheap and at least I thought I might get something at the right price for a change. — **E. Green, Letchworth.**

We are offering DOS 2.5 on a disc free with our Disc Doubler. See Page 60.

I'd like to know if there any chance of an Atari version? — **D. Harrison, Redcar.**

We've heard a rumour that an Atari version is being negotiated. For a similar game while you're waiting try Star Raiders.

Incidentally, the rumour suggests a 68000 version called Star Rider.

Upgrading the 520ST

I AM glad that someone has started a British magazine which is Atari orientated and is easily available at most newsagents.

I have several points that need to be clarified and so I decided that your column might be able to help. I have owned an Atari 800 for three years and I am very interested in the new ST series.

However after contemplating

ing placing an order I have decided that I need to have available the answers to the following questions.

First of all, if I purchased a version of the 520ST with a disc orientated DOS could I upgrade it to a ROM version when the ROMs become available?

Secondly, does the ST manual contain a thorough memory map or will I have to purchase one when one becomes available?

Finally, in my collection of 300 magazines there is not one review of 486 Personal Basic. Do you know where I might be able to find out about the standard, if not the ST's, version of Personal Basic?

Having already written to Atari (UK) and only receiving their standard sales letter, I would be very grateful if you can help me. — **Jason Hughes, Letchworth.**

ROM upgrades will be available to purchasers of

Lusting after Elite

ALTHOUGH there are thousands of computer games available I've one I find me really like.

Recently however I discovered an excellent game on my friend's BBC Micro - Acornsoft's Elite.

Now I've heard they've started to produce versions for other micros. Obviously what

disc-based Gam systems, probably in the autumn.

The answer to your second question is not known at present. The Basic manual might contain some form of memory map, but the Gam manual certainly doesn't.

We don't know of a Personal Basic review either. By writing to Digital Research themselves.

Atari link-up

I HAVE an Atari 400 and am eagerly going to buy a 600KM when it is released.

I would like to know if there is any way I can connect these two together for a computer link-up. — Peter Dunlop, East Kilbride.

■ You can connect the two machines via the joystick ports to send information from one to the other.

However you'll be able to use the same cartridges or discs that you've used on your 400.

Of course this assumes that the 600KM ever sees the light of day.

User group needed

LAST Christmas I treated myself to the 600K 7050 disc drive and the 1027 printer. It is all very confusing, but I am enjoying myself enormously trying to understand it all.

I would be very grateful if you could possibly help me with the following:

- How do I find out if there is an Atari user group in my area?
- Could you advise me the best software package to input separate 12 month's sales figures for 1984 with the annual total? — then as each month's 1985 figures are fed in show the corresponding 1984 figure, calculate the moving annual total and project what the 1985 total figure will be. — P.J. Savage, Leeds.
- There doesn't seem to be a user group in the Leeds area,

but try calling the Atari Hotline line in case they've recently received news of one.

You need Mosaic or Barnco to do what you require. Mosaic is not as good as Synco but will do what you want with no problems.

Looking for a book

ON the June edition of Atari Open there was the listing of a game *Submarine* by Vince Apps, one of 40 educational games listed in a book published by Granada Collins.

So far I have been unable to obtain a copy of this book, and I wonder if you can tell me where I may obtain one. — R.H. Cook, Leicester.

■ Any decent bookshop should be able to order it for you.

... and some software

I WOULD like to congratulate you on a fine magazine for the Atari. I'd got it on prescription (after subscription) so I've left out about the lack of support the Atari seems to get.

On a recent visit to Specs I

found they stocked the 60001, but little software, yet for the Commodore and Spectrum there was plenty.

What is the point of stocking the hardware if you don't stock software? There are many products for the Atari available by mail order, the problem being that unless you have tried the product before you buy it you can be very disappointed.

So, writers, please give the support the Atari and its owners deserve. — P.D. Little, Carlisle.

Failure to save

I HAVE an Atari 600K, having upgraded from a 400. The step in the available RAM has increased my programming skills.

So I wonder if you could tell me if there is an additional ROM pack for the 60001, to hopefully boost it up past that point. Not only RAM — is there any for ROM? Also do you know if there are any programs available to increase the base rate on the 1010 data recorder? — Craig Franklin.

■ ROM is expanded via the cartridge port on top of the machine. At the moment 8K is the maximum for an 60001.

in this country.

Base rate on the 1010 recorder can be changed up to about 800 baud from its current 600 baud.

Beyond this, reliability suffers severely. Programs have appeared in the computer press to achieve this but if any of our readers have written one we'll be glad to take a look at it.

Packing in the RAM

I HAVE an Atari 600K and a 1010 tape recorder, but I cannot save programs that I have typed in. Can you please help me so that I can save great programs like your Bomb Run on tape? — Eddie Marston, Vintry, Aberdeen.

■ Unless you have faulty equipment there should be no problem.

With a program in memory and the Ready prompt on the screen, press the Record and Play buttons together on your 1010 (the type CSIA6) and press Return twice. The program will then be saved to tape.

To load it back in, re-wind the tape, press Play on the 1010 and then type LOAD and press Return twice.

MORE HAPPENING ON DISC

I WRITE to correct what I feel to be a misconception in your answer to Nigel Ward (Mail bag, July 1985).

You are wrong in saying that games on tape and the same game on disc are of the same size. *Zaxxon* was specifically mentioned, and in this case the disc version contains missiles and movement in 3D in the daylight screen which the tape version lacks.

Now without getting too technical, the disc format for such a game does not contain any form of DOS.

Instead the first 6 bytes of sector 1 contain firstly a density byte, then the number

of 128 blocks of memory to load, then the memory address to start the load in (disc format), and finally the initialisation address, again in disc format.

The operating system extracts this information and proceeds to load the indicated number of blocks.

This is the same format as used for a disc tape, however it does not take any account of any protection scheme that may be present.

Now such a record is called sequential, so each block is loaded in and by one serially until it is fully loaded, so the disc requires no directory nor DTOS, so no DOS needs to be loaded to handle these entries.

A disc load file on the other hand requires both. Such a file is called a linked file, the main difference being that each sector only contains 128 bytes of program with the last 2 bytes containing information about the number of bytes in that sector, the file number and where the next sector is to be found on the disc. No doubt this will be covered in these pages in the future.

Information from 'De-At Atari' and 'Technical User's Notes', although both are heavy reading.

Many thanks for your support for the most superior home computer. — Davey, Crux, Wexford.

ZOOMSOFT

HOMEWORD

The personal WORD
PROCESSOR 1984 outstanding
software AWARD

Simple versatile effective.
HOMEWORD is a writing tool
designed for the home. It offers the
power of a sophisticated word
processor without the complications.
Use HOMEWORD to write school
assignments, shopping lists, letters,
business memos and reports.
HOMEWORD makes putting your
ideas on paper a snap.

An easy to follow audio cassette will
introduce you to HOMEWORD and
take you step by step through its
operation. No complicated commands
to memorize, so anyone in your
family can learn to use HOMEWORD
in a matter of minutes. The menu
features ICONS (pictures).

These ICONS make HOMEWORD a
joy to use.

Other features include MOVE TEXT/
COPY TEXT/ DRAGE TEXT/ INSERT
ERASED TEXT/ FIND/ FIND and
REPLACE/ INSERT DOCUMENT/
INCLUDE DOCUMENT/ UNDERLINE
TEXT and JUSTIFICATION. A full 80
characters per line enables you to
view your documents as they will
appear in printed format. Use with
any printer. Many other fine features
make HOMEWORD a great WORD
PROCESSOR.

DISK £48.95

ARCADE

BOULDER DASH C/D	14.95
DI'S WELL CART	14.95
BOS QUEST CART	14.95
MR ROBOT C/D	14.95
MINOR 2048w CART	9.95

SUBLOGIC

Flight Simulator II	48.95
---------------------	-------

WE'LL INCREASE YOUR STORAGE AND TRIPLE YOUR SPEED!

Introducing the US DOUBLER. US
DOUBLER increases your storage to
180K, and is totally compatible with
other double-density disks, all DOS
for ATARI, and all ATARI 1050 disk
drives.

New SPARTA DOS CONSTRUCTION
SET will triple your speed (true
double-density, ATARI 1050 low
and a half times density) and single
density. Time/ Day/ Date on your
file. Ram. Disk for 32 models.
FREE SPARTA DOS
CONSTRUCTION SET when you buy
the US DOUBLER!

a hardware/software combination,
installation required, complete
instructions provided.

£79.95

THE ULTIMATE WAR GAME SIMULATIONS!

STRATEGIC SIMULATIONS

Broadside	£41.65
Begins	£41.65
Field of Fire	£41.65
Objective Rank	£41.65
50 Mission Crash	£41.65
Colonial Conquest	£41.65
Computer Quartermaster	£41.65
Gamezone Warrior	£41.65
Six Gun Shootout	£41.65
Rails West	£41.65
The Cosmic Balance	£41.65
Cosmic Balance II	£41.65
Breakthrough in Antennas	£41.65
Operation Market Garden	£41.65
Carrier Force	£41.65
Kampfgruppe	£41.65
Reforger 88	£41.65
Computer Ambush	£41.65
War in Russia	£41.65

All products are available direct

SILICA SHOP 01-308 1111, SOFTWARE EXPRESS 021-384 5085, SILICON
CHIP 0753 70635, J.B. WOTTON & SONS 0275 214118, PEARS
ELECTRONICS IRELAND 01-748872/3/4, RADFORD HI-PI Ltd. 0272 428247
MICROBYTE 041-820 8823, THE ARMY SHOP SUNDAY SOFTWARE and other
good computer shops.

If you have problems in obtaining any of these products then you can order direct. All
cheques/P.O.s should be made payable to ZOOMSOFT. *Post in:*

ZOOMSOFT

48 Hurnsworth Mews, London N.W.1 6DB

MAGNIPRINT II

THE ULTIMATE
GRAPHICS PRINTING
PACKAGE

Print your ATARI graphics like you've
never seen before! MAGNIPRINT II
is the most powerful print utility
available for your computer. It is the
only software that can accurately
print GTIA modes with 16 shades.
Prints all graphic modes. Can blow
up your pictures to wall sized
posters. Special option lets you
centre the picture on the page.
Accepts your own graphic creations
or those created with
MICROPAINTER, FUN with ART,
PAINT, SUPER SKETCH, ATARI
TOUCH TABLET, IDOLA PAD,
ATARI LIGHT PEN GRAPHICS,
B/GRAPH, GRAPHICS MAGICIAN,
and many others. Includes many
beautiful sample pictures. Add text
to your pictures. Allows you to print
the whole screen or any selected
portion of the screen.

FREE with every MAGNIPRINT II
PRINTALL. PRINTALL prints your
programs and files just as they appear
on your screen. It clearly prints all
ATARI graphic characters including
INVERSE characters. This alone is
worth the price.

Disk £26.95

**SEE YOUR
LOCAL
DEALER
NOW!**

**TRADE ENQUIRIES
Tel: 01-723 0562**

FREE T-shirt for all new

Here's a really unbeatable offer for all Atari users!

This top-quality T-shirt, woven in an attractive shade of grey with the Atari logo in red, is a genuine American 'Fruit of the Loom' product, made from 50% cotton/50% polyester.

Worth £4.25, it will be sent FREE with every new subscription ordered on the form on the right!

The T-shirts are also on sale at £4.25. Please order on our official order form.

Made in these sizes:	
Small	- 34" - 36"
Medium	- 36" - 38"
Large	- 38" - 40"

Keying in long programs too much of a chore?



Then give your fingers a rest by sending for our monthly disc, containing all the programs from each issue of Atari User. See order form opposite.

ATARI'S Newsletter: Make machine code programs sing again. **Fruit Goggles:** Run mazes with the fast machine simulation. **Starbuck:** Complex patterns made easy. **Phases:** Real-time graphics perfect your programs from playing eyes. **Monday List:** Transmission programs. **Golden WWF:** Footballs and adventures. **Yacht:** Tables. **Demomaster:** programs. **JULY:** **Bank Run:** Finance the dearest city and land safely. **Demomaster:** Find out what's going on days inside your Atari. **Treasure Hunt:** Use logical thinking to find the treasure. **Personal Demomaster:** Keep generating passwords till you find out you like. **Reptiles:** Program your microcomputer on eggs. **Quadrant:** Can you cut out the maze of mazes in the belly? **AUG:** **Play Jump:** Guide the frog across the road and over to his home in the center of the maze chain. **LOOSE:** Run Power! Use the same title of memory to point effect, or use the drawing routine to produce some pretty displays. **Submaster:** Sculls the submarine.

Parke Starbuck: Draw pretty pictures with only a crystal. **Random Numbers:** Get random numbers from anywhere. **Fifty Fifty:** Can you keep the Fifty Fifty from losing its title? **MM:** **Whodunnit:** The combination of color, sound and animation makes this early learning game a winner with the children. **Friends:** Interesting! Enter your neighbours party with these ready-made sounds. **More:** Enter, display and run machine code programs with the brand-new loader. **Attack:** **Reptiles:** A fast action game to keep you on your toes. **Random:** Enter the first four your machine code are. **Binary:** Use this program to convert binary numbers to binary notation. **SEPTEMBER:** **Run:** **Run:** Help Hopper the bit march the maze mazes! **Months:** **Data:** **Make:** Convert your machine code numbers to DEC. **Months:** **Display:** **List:** **Demomaster:** programs. **Screen:** **Design:** Jump your Atari 8 screen to a 1024 pixel. **Back:** Solve the Back problem.



Double the capacity of your discs with this money-saving offer!

DISK DOUBLER

Allow us to cut out a correctly positioned notch which will enable you to use BOTH sides of the disc - and HALVE your costs. Extensively well made in a compact design, it has a unique position guide to assure pin-point accuracy!

£9.95

Free delivery with
£20.00 order

New subscribers to

ATARI USER

Back issues



£1.25

May issue: Profile of Jack Tramiel, pioneer of the new machines, Attack Squad, Advertising, Alphabet Train, Heart utility, Software reviews, Sounds, the 8002, Messages, Atari Insights - regular series of tutorials: Bit Wise, Beginners and Graphics, PLUS News and Mailbox.

June issue: In-depth analysis of the 10002, Schematics, Advertising, Random numbers, Software reviews, Ping Pong, Microscopic Sounds, Atari Insights - regular series of tutorials: Bit Wise, Beginners and Graphics, special 12 page feature on Communications, PLUS News and Mailbox.

July issue: Discussion, Bomb Run,

DOS 2.5, 17 Commandments, Advertising, Display List Tutorial, Software Reviews, Power Functions, Tramiel Hunt, Keyboard Sounds, Microscope, Insights - Regular series of tutorials: Bit Wise, Beginners and Graphics PLUS News and Mailbox.

August issue: In-depth analysis of the 10002, program protection routines, Fruit Combler, Assembly, Touch Teller programs, test look at Logo, Reader 1999, Dos 2.5 complete offer, Display List tutorial, Microscopic, Software reviews, Insights - regular series of tutorials: Bit Wise, Beginners and Graphics PLUS News and Mailbox.

Protect your DOS2 without fancy dust cover made of soft, plastic, clear and water-resistant vinyl, bound with strong cotton and decorated with the magazine's logo.



Only £5.95

How to keep your collection complete

Bound in shatterproof tough pol. and featuring the Atari User logo, the hardcover binder will hold a year's supply of the magazine firmly secured in place with metal rings.



Only £3.95 (RUC)

Look what's coming in Atari User!

- Lots of easy-to-follow features on everything to do with Atari computing. Whether you're a beginner or an expert, you'll always find something to delight and intrigue you.
- In-depth independent evaluations of all the new hardware add-ons now being developed to make your Atari much more powerful and much more versatile.
- Reviews of all the very latest games, educational and business programs now being produced for the Atari.
- PLUS lots of things you will be able to buy in yourself - games, utilities, graphics.

ORDER FORM

All prices include postage, packing and VAT. Valid to September 90. No mail prices on application.

Please enter your requirements by ticking boxes

Annual subscription

UK & EIRE (incl. postage)	7603	
Overseas (airmail) 620	7503	
Overseas (airmail) 680	7600	
Every 7 days - credit card required	7503	

Continued with

Back issues

1980	
May 2000	
June 2000	
July 2000	
Aug 2000	

TOTAL

Monthly Disc

May issue	7617
June issue	7618
July issue	7619
August issue	7620
September issue	7621

TOTAL

Miracle Modem including software and hardware

7603	
TOTAL	

T-Shirt

Small	7607
Medium	7608
Large	7609
TOTAL	

Dust Cover (DOS2 only)

7603	
TOTAL	

Binder

7609	
TOTAL	

Disk Doubler - free DOS 2.5

7603	
TOTAL	

Payment please indicate method

☐ Access/Mastercard/Visa

☐ Barclaycard/Amex

☐ Cheque/PO made payable to Database Publications Ltd

Name

Address

Signature

Send the Atari User, FREEPOST, Europe House,

68 Chichester Road, Hazel Green, Birmingham B67 8AN.

(No stamp needed if posted in UK) Please allow 28 days for delivery

Don't forget to include your credit card number and full address.

Order by phone 045-446 0170

- by Postal Ray 180 Mailbox No. 416400003

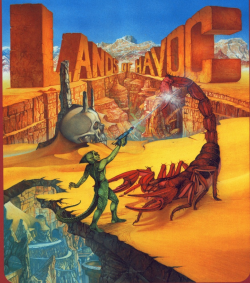
- by Column Gold Mailbox No. 791640001

COMMODORE 64/SINCLAIR QL

2,000 Screen Arcade Adventure

ARRIVING SOON

FOR THE ATARI ST



MICRODEAL

INTERNATIONAL KARATE



**..And you thought
you'd seen a Karate game**

As you know, like the Martial Arts, Perfection is the only accepted standard, so play nothing until you play — SYSTEM 3's — INTERNATIONAL KARATE

For the Spectrum,
C.64, Amstrad and
all 48k Ataris at ONLY

£6.50

SYSTEM 3 SOFTWARE, SOUTHBANK HOUSE, BLACK PRINCE ROAD, LONDON SE1 TEL: 01-795 6171, EX. 68